

Dumfries and Galloway Council
LOCAL DEVELOPMENT PLAN 2

Archaeologically Sensitive Areas (ASAs)

TECHNICAL PAPER

JANUARY 2018



Contents:

Background	2
ASAs –Rural Areas	4
Descriptions of Rural ASAs	4
ASAs-Settlements	10
Descriptions of Settlement ASAs	10
Maps 1-42	15
Contacts and Further information	45

January 2013

Archaeologically Sensitive Areas

Background

In some parts of Dumfries and Galloway the archaeological interest is not confined to a particular site but extends over large areas. In order to highlight to potential developers of large scale projects such as wind farms, mineral extraction or forestry in rural areas, or town centre developments in settlements, that there is a particular need to consider these extensive archaeological interests and issues that might arise from their proposals at an early stage, Archaeologically Sensitive Areas have been designated by the Council and occur both within settlements and within rural areas.

Within the ASAs there are also individual archaeological sites from which particular issues will arise, for example, the setting of a hill fort.

This Technical Advice Note contains background information, including maps, to inform and support Policy HE4: Archaeologically Sensitive Areas.

Policy HE4: Archaeologically Sensitive Areas.

The Council will support development that safeguards the character, archaeological interest and setting of Archaeologically Sensitive Areas (ASAs) as designated by the Council.

Boundaries of ASAs are shown on Map 6 and the Proposals Maps

Note: The proposals maps of the Local Development Plan 2 **only show boundaries where scale allows in the Rural areas. In Settlements the boundaries of ASA's do not show on the proposals maps.**

This policy and the designated areas have been carried forward from the 1999 Structure Plan and no changes have been made, apart from factual updates.

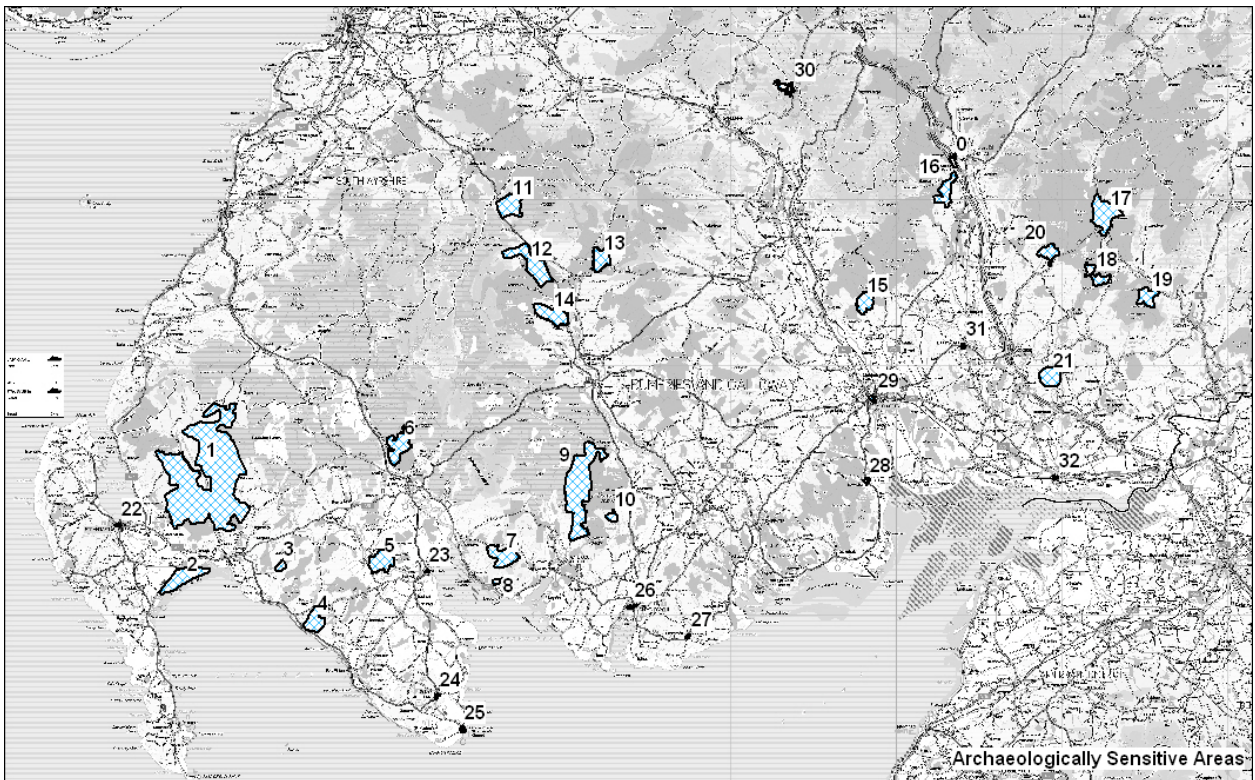
Two types of ASA have been identified:

- Rural areas
- Settlements

The purpose of this document is to highlight the justification for the designation of each area in order that potential developers are aware of these matters at the earliest stages of developing their proposals, in order that they can take them into account.

The base map used for drawing up the boundaries of the rural sensitive areas was the Ordnance Survey 1: 50,000 map. In some cases the extent of the sensitive area follows

a forest edge. Elsewhere a contour, road or topographical feature may delimit an area. Accordingly the maps should not be used at a scale less than 1:50000 to determine their precise boundaries, as they are derived from hand-drawn originals and, although they have been subjected to Positional Accuracy Improvement, they have had no further digital enhancing. Within urban contexts the Ordnance Survey 1:10,000 map provided a baseline guide to the areas.



- | | | | |
|--------------------|----------------------------|----------------------|-----------------|
| 1. East Rhins | 10. Loch Mannoeh | 18. Tanlawhill | 27. Dundrennan |
| 2. Torrs Warren | 11. Water of Deugh | 19. Boyken Burn | 28. New Abbey |
| 3. Knock Fell | 12. Bardennoch – Garryhorn | 20. Dryfe Water | 29. Dumfries |
| 4. Changue Fell | 13. Stroanfreggan | 21. Burnswark | 30. Wanlockhead |
| 5. Torhouse | 14. Polharrow Burn | 22. Stranraer | 31. Lochmaben |
| 6. Coldstream Burn | 15. Whitestanes Moor | 23. Wigtown | 32. Annan |
| 7. Cambret Moor | 16. Beattock Hill | 24. Whithorn | |
| 8. Cairnholy | 17. Raeburnfoot | 25. Isle of Whithorn | |
| 9. Grobdale | | 26. Kirkcudbright | |

ASAs-Rural Areas

In some parts of the rural area, the archaeological interest is not confined to a particular site but extends over large areas. Developments of large scale projects, such as wind farms, mineral extraction or forestry can affect character, archaeological interest and setting over a wide area. Developers should be aware that there is a particular need to consider these extensive archaeological interests and issues that might arise from their proposals at an early stage. As well as the potential for direct effects on sensitive archaeological assets, there is also the potential for developments to have an effect on the setting of features which will need to be taken into account and assessed when considering development.

In defining these areas consideration has been given to the following sensitivities:-

- Particularly good group survival and/or importance.
- Landscape setting where this is a significant dimension of the archaeological remains.
- Areas where there is an existing or potential recreational aspect.
- High density of archaeological remains worthy of preservation.
- Rare group survival in an otherwise improved or already generally afforested area.

Definition of rural archaeologically sensitive areas is based on the current state of knowledge. Archaeological survey and research are ongoing and it is highly likely that as surveys are carried out in the remaining unimproved uplands that previously unrecorded remains will be discovered. Aerial photography and other forms of archaeological prospection will increase understanding of lowland, improved areas.

Development proposed in areas of high archaeological potential, within or around ASAs, where detailed survey has not been conducted, will probably require prior survey to be carried out. This will help inform the proposal in order that archaeological remains can be identified and mapped and to enable recommendations for preservation and mitigation of effects to be made.

Description of Rural ASAs

The following is a description of the interest of the areas, starting in the west of the region:

1. East Rhins NX 18 65

Archaeological survey of the best “East Rhins” carried out by the Royal Commission on the Ancient and Historic Monuments of Scotland (RCAHMS), and published in 1987 revealed extensive, well-preserved archaeological remains in this generally peat-

covered landscape. In their twenty-fourth report to parliament, in 1988, the Commissioners list 606 individual monuments falling within the survey area which they consider to be “Most worthy of preservation”.

Historic Scotland followed up the survey by designating large numbers of scheduled monuments.

The mapped sensitive area indicates ground where remains identified by RCAHMS are concentrated, plus extensions to the east, outwith their survey area where the high density is known to continue. Definition of the area is a simplification of available information and there are substantial gaps in the archaeological distribution which it is not possible to show at scale 1: 50,000. Generally however, developers and land managers should be aware that large scale proposals in the East Rhins are likely to be required to accommodate substantial areas of archaeological interest.

Reference: Royal Commission on the Ancient and Historic Monuments of Scotland 1987, ‘The Archaeological Sites & Monuments of Scotland, 26, East Rhins, Wigtown District, Dumfries and Galloway’

2. Torrs Warren NX 15 55

A vast collection of archaeological finds, ranging from the early prehistoric to the late medieval has come from the eroding sand dunes at Torrs Warren prior to it becoming a Ministry of Defence property and the dune system stabilising. It is an extremely important area for early human settlement and all ground disturbance needs to be monitored.

3. Knock Fell NX 25 55

Knock Fell is a prominent landmark of the Machars landscape, crowned by a prehistoric fort which dominates the surrounding area.

To remain meaningful the open landscape setting must be maintained.

4. Changue Fell NX 30 50

Many good quality archaeological structures survive in the North West Machars. Where the ground is improved the remains are ‘isolated’ features in a modern landscape. There are however pockets of unimproved ground where landscapes of associated structures can be identified. Changue Fell is of interest in this respect.

5. Torhouse NX 38 56

It is important to maintain the setting of Torhouse stone circle and associated features in the open landscape setting of Bladnoch Valley. The site is one of the Region's most visited monuments and is in the care the Scottish Ministers.

6. Coldstream Burn NX 40 70

The only known group of good quality early prehistoric monuments in the Cree valley which survive in an open landscape setting, in addition to good groups of medieval and post-medieval features. If subjected to detailed ground survey it is highly probable that the record of prehistoric and more recent remains in this area would be considerably increased.

Note: 2013 update. The southern part of this area at Barclye is owned by the Royal Society for the Protection of Birds who have implemented a woodland planting scheme that accommodates the archaeological interests.

7. Cambret Moor NX 53 57

An excellent landscape of well preserved and varied Bronze Age structures survives in unimproved ground on Cambret Burn offer exceptional research potential owing to extensive peat cover and water-logged conditions in the valley bottom.

8. Cairnholy NX 52 54

The sensitive area is intended to highlight the existence of the Cairnholy chambered cairns, rather than strictly define an edged zone. These monuments in the care of the Scottish Ministers are a visitor attraction where landscape setting contributes significantly to the interest of the site.

It is desirable that the open setting is maintained by sympathetic developments and forest design in the surrounding landscape niche.

9. Grobdale NX 62 66

Ground survey by RCAHMS (1990) has revealed an extensive scatter of monuments in this tract of unimproved moorland. The remains are particularly important since the surrounding area is heavily afforested and was not subject to the same detailed ground survey prior to afforestation.

10. Loch Mannoch NX 66 62

A previously known and important group of Bronze Age structures at the head of Loch Mannoch has recently been extended as a result of ground survey by RCAHMS in 1990.

11. Water of Deugh NX 53 99

This area recognizes multi-period archaeological remains featuring in a Heritage Trail promoted by Carsphairn Heritage Group. Some of the remains featured on this trail are tightly surrounded by afforestation, but should become more accessible through the implementation of new forest plans. The western approach between Benbrack and Lamford Hill is currently unplanted. This is the area indicated on the sensitivity map to highlight the existence of the recreational trail in the area.

Note: 2013 update. In the 1970-80's the land use of large areas of Carsphairn parish changed from stock rearing on grazed pasture to commercial forestry. The community was concerned about population decline and community well-being. Establishing a series of heritage trails was a community initiative.

12. Bardennoch – Garryhorn NX 56 92

This area recognizes multi-period archaeological remains featuring in a Heritage Trail promoted by Carsphairn Heritage Group. The high quality monuments are in a spectacular landscape setting.

Note: 2013 update. In the 1970-80's the land use of large areas of Carsphairn parish changed from stock rearing on grazed pasture to commercial forestry. The community was concerned about population decline and community well-being. Establishing a series of heritage trails was a community initiative.

13. Stroanfreggan NX 64 91

This area recognizes multi-period archaeological remains featuring in a Heritage Trail promoted by Carsphairn Heritage Group. The Southern Upland way passes through the area. Important Mesolithic finds relating to the earliest human occupation of the region have been made in the valley bottom.

Note: 2013 update. In the 1970-80's the land use of large areas of Carsphairn parish changed from stock rearing on grazed pasture to commercial forestry. The community was concerned about population decline and community well-being. Establishing a series of heritage trails was a community initiative.

14. Polharrow Burn NX 58 87

The Stewartry Environmentally Sensitive Area was rapidly surveyed for archaeological remains in the 1990s. The resulting report states: "The north side of the Polharrow Burn has a particularly rich and varied archaeological landscape worthy of preservation. An isolated cairn, remains of cairn fields associated with isolated enclosures, deserted farmsteads with extensive field systems, other traces of upland agricultural practices and traces of minor industrial activity are all to be found on this side of the valley. Although many of these monuments are quite common in upland areas, the sum total of the landscape merits protection at a level below scheduling." This area recognizes these interests.

15. Whitestanes Moor NX 96 88

A remnant pocket of unimproved moorland in an otherwise generally improved or afforested area where a number of archaeological remains have been identified. Partial excavation of structures at NX 967 882 was carried out in the 1960's, showing these to be well preserved Bronze Age structures. The other remains identified on the moor appear to be similar in date.

Although Bronze Age remains are extensive in other parts of the region e.g. East Rhins, such landscapes of associated features are rare in lower Nithsdale and as a group are thus of considerable interest.

16. Beattock Hill NT 06 02

The unafforested tract of land west of Moffat extending from Coats Hill to Stidriggs contains varied and extensive archaeological remains. Many structures belong to the later prehistoric period, hill forts, enclosed and unenclosed settlements with associated traces of cultivation. Areas of peat cover give potential for environmental analysis and the opportunity to understand more fully the relationships between these various elements of the prehistoric landscape.

The Southern Upland Way passes through the area.

Outwith the mapped sensitive area there are further important archaeological remains e.g. Park Hill Fort and settlement NY 061 975, Stidriggs long cairn NY 041 987, Knock Hill fort NT 073 004. The existence of these features in the locality adds to the general interest of the area.

17. Raeburnfoot NY 25 99

Multi-period cluster of archaeological sites many first identified during ground survey by RCAHMS published in 1980, and extensively re-surveyed for the RCAHMS volume

Eastern Dumfriesshire: An Archaeological Landscape, published in 1997. Their significance of these monuments in open moorland is enhanced by extensive surrounding afforestation that has enclosed and obscured archaeological sites in the surrounding area.

Note: 2013 update. Implementation of forest plans has improved the landscape setting of many monuments.

A number of sites have on site interpretation and feature in trails promoted by the Forestry Commission, Archaeosites and the Eskdale Prehistoric Trail, (set up by the Eskdale Archaeological Society).

18. Tanlawhill NY 24 91

Corridor of good quality remains many first identified during survey published in 1980, and extensively re-surveyed for the RCAHMS volume 'Eastern Dumfriesshire: An Archaeological Landscape' published in 1997. Many of these have been scheduled by Historic Scotland.

This is a 'window' of upland archaeological landscape in an otherwise highly afforested area.

19. Boyken Burn NY 30 88

An exceptional cluster of multi-period remains many first identified by RCAHMS during survey published in 1980, and extensively re-surveyed for the RCAHMS volume 'Eastern Dumfriesshire: An Archaeological Landscape' published in 1997. Many of these features have now been scheduled by Historic Scotland.

20. Dryfe Water NY 18 94

A concentration of archaeological remains dating from the later prehistoric survives in good condition on the uncultivated hillsides around Waterhead. The fort on Rangecastle Hill not only dominates the immediate area, but gives impressive views in all directions, emphasizing its strategic location.

21. Burnswark NY 18 78

This flat topped hill, visible throughout Lower Annandale is the setting for an excellent suite of archaeological remains. On the summit there is a Bronze Age cairn, the region's largest prehistoric fortification and an artillery redoubt, probably dating to the late 17th century. The lower slopes are occupied by Roman siege works.

To remain meaningful, the open setting, allowing views both from, and onto the hill in order to appreciate its strategic importance and thus to give the monuments meaning, must be maintained.

ASAs -Settlements

Several of the towns within the region have medieval, or earlier, origins. They were deliberately planned as a result of royal or noble patronage. Key elements include castles, churches, marketplaces and crosses, as well as a distinctive street layout, with distinctive property boundaries in the form of long 'burgage plots' extending back from the street frontage. In many cases this medieval pattern is still clearly visible in the centre of the towns that developed around the historic core. As well as upstanding buildings and features of architectural and historical interest, frequently recognized by Conservation Area status, these areas also have a potential for below-ground remains.

The Scottish Burgh Survey, funded by Historic Scotland and its predecessors, has produced reports on the history and development of medieval burghs which also research and identify areas of archaeological interest. The boundaries of the ASAs are informed by these reports and additional information that has come to light.

There are also a number of areas of interest in and around settlements that have developed for a particular purpose, namely New Abbey, Dundrennan, Wanlockhead and the Isle of Whithorn.

Appropriate archaeological investigations and recording will be required where developments involve ground disturbance or significant change to historic structures. The Council's Archaeologist should be consulted at an early stage to advise on the significance of any particular site and measures required.

Description of settlement ASAs

The following is a description of the interest of the settlement areas, starting in the west of the region:

22. Stranraer Burgh NX 06 61

Stranraer is the principal town of Wigtownshire in recent times, at the south end of the large and sheltered anchorage of Loch Ryan. It was founded in 1595 as a burgh of barony under the superiority of the Adairs of Kinhilt, the owners of the Castle of St John, and was created a royal burgh in 1617. Major expansion of both population and industry took place in the later 18th century, and the 19th century saw intakes of land along the

shoreline. The sensitive area incorporates the castle, centre of the medieval town, and the waterfront areas.

23. Wigtown Burgh NX 43 55

Although the burgh is not mentioned until 1292, the sheriffdom was in existence in 1263, and the evidence of Northumbrian and Viking crosses in the church indicates that the town site was occupied several hundred years before that date. The royal burgh was granted to Sir Malcolm Fleming by David II in 1341. Wigtown later reverted to the Crown in 1455. The earthwork remains of the castle, which existed in 1291, lie to the south of the town; the church lies at the eastern end overlooking Wigtown Bay, and evidence suggests that the medieval Dominican friary was also located on the level ground on the east side. The medieval town has classic plan with burgage plots radiating from a broad market place, with gates or ports at the east and west ends. The mercat cross has been moved from the west end of the market place to the gardens in the centre.

24. Whithorn Burgh NX 44 40

A small town existed at Whithorn, the cradle of Christianity in Scotland, by the early 5th century, when St Ninian established it as the seat of a bishopric. The church, housing the relics of St Ninian and a place of pilgrimage, was rebuilt as a cathedral and priory church in the 12th century, the date of the earliest parts of the present ruin. Whithorn was created an ecclesiastical burgh in a charter to the prior and convent of Candida Casa by Robert I in 1325, and it was erected to royal burgh status by James IV in 1511.

By the 14th century the town had been moved from around the church to its current location, built along either side of an extended marketplace, with 'ports' at both ends. There are three clearly defined exits on the south-east side, leading to the Isle of Whithorn.

Key features include the priory and surrounding area, the core of the medieval town with the market place and distinctive burgage plots running back from it, the 18th century expansions to the town and the area to the east of the town where the castle is traditionally said to have been located.

25. Isle of Whithorn NX 47 36

The Isle of Whithorn is one of the most southerly villages and seaports in Scotland, lying on the coast about three miles from Whithorn. It has been built around a naturally sheltered harbour. The promontory is the location of a prehistoric fort, later re-occupied in the early medieval period, and a 13th century chapel, used as a stopping off point for pilgrims landing on Isle Head and making their way to Whithorn.

The isle is no longer a true island, though Ainslie's maps of the late 18th and early 19th centuries do show the Isle as an island. The southerly part of the main street was originally a causeway, with the harbour located on what was then the island. The open aspect to and from the isle, across the harbour, should be maintained.

26. Kirkcudbright Burgh NX 68 51

The first notice of a burgh of Kirkcudbright occurs in 1330. The burgh remained in Douglas hands until the 1455 forfeiture of that family. A charter of James II in 1455 made Kirkcudbright a 'free burgh', a grant which was confirmed in 1633 and again in 1641. The town was centred around the monastery of the Greyfriars, (built at the western end of the original fortified motte) and the harbour, with the castle at Castledykes forming the western edge of the town. Maclellan's Castle and Greyfriars formed the hub of the later medieval town. The sensitive area takes in the castles, medieval core and the area to the north-east along the waterfront, where the town expanded in the late 18th and early 19th centuries.

27. Dundrennan NX 74 47

Founded in 1142 by Fergus of Galloway, the abbey was home to a community of Cistercian monks, originally from Rievaulx Abbey in Yorkshire. Mary, Queen of Scots, after the Battle of Langside, spent her final night in Scotland here, in 1568. In 1587 the abbey and lands passed to the Crown, and in 1621 it was annexed to the royal chapel at Stirling. For many years the buildings were used as a quarry for the erection of houses in the vicinity, but in 1842 steps were taken to repair and preserve what was left of them. A medieval bridge, part of the abbey precinct, lies just to the north where it is still in use for a public road.

The setting of this much-visited attraction at the open bottom of the valley, within its precinct, is the primary element of this sensitive area.

28. New Abbey NX 96 66

Sweetheart Abbey was founded in 1273 by Lady Dervorgilla of Galloway in memory of her husband John Balliol. On her death, she was laid to rest next to her husband's embalmed heart and the Cistercian monks named their abbey in memory of her. The immediate abbey precincts extended to 12 hectares and sections of the surrounding wall can still be seen today. Much of the village is built within the precinct, and the village also possess a fine watermill with mill pond and extensive lade system. There are extensive designated areas in the village.

29. Dumfries Burgh NX 97 76

Dumfries was the first royal burgh in south-west Scotland, first mentioned around 1150 when Radulf, sub-king of Strathnith, granted land to the Hospital of St. Peter at York. A royal charter of William the Lion, dating between 1179 and 1185, confers land 'between the castle and the church' to Jocelin, bishop of Glasgow. It is thought to have become a royal burgh shortly after that date, and its status was confirmed by a charter of Robert III in 1385. The castle mentioned in the grant now lies under the Academy, and the church is probably St. Michael's Church, at the southern end of the town.

As a regional centre it had a long marketplace, widening from the Fish Cross at the southern end to a broad northern end where Burns Statue Square now lies. The burgage plots are still evident in the town's layout, as are the 'back raws' of Irish Street and Queensbury Street.

Friar's Vennel leads from the west end of the town past the site of the Greyfriar's Monastery to the Whitesands and the crossing of the River Nith into Galloway at Devorgilla's Bridge. The medieval chapel of 'Chrystal Mount' lay on a hillock to the east of the town, outside the town's defences.

30. Wanlockhead NS 86 13

The areas around the village of Wanlockhead contain extensive above and below ground remains of lead mining activity, mostly from the 18th and 19th century, but including elements of earlier features. The mining remains are the single largest designated scheduled site within the region. The ASA reflects the designated area.

31. Lochmaben Burgh NY 08 82

Lochmaben was founded before 1296 as a burgh of barony of the Bruces, lords of Annandale, whose principal castle stood here. After the accession of Robert Bruce to the throne in 1306, the lordship of Annandale, including the superiority over Lochmaben, was granted to his nephew, Thomas Randolph, Earl of Moray, from whose descendants it passed to the Earl of Douglas in 1409. Following the forfeiture of the earldom of Douglas in 1440, Lochmaben came to be accepted as a royal burgh, and was formally enrolled as one in 1605.

The town was built on an island of land surrounded by several lochs. The first castle lay close to the town, in an area now occupied by the golf course, but the later castle lay at the southern end of Castle Loch, with the town at the northern end.

The wide market place formed by the High Street, and the old churchyard have medieval origins. The restored market cross is now in a public garden on Bruce Street.

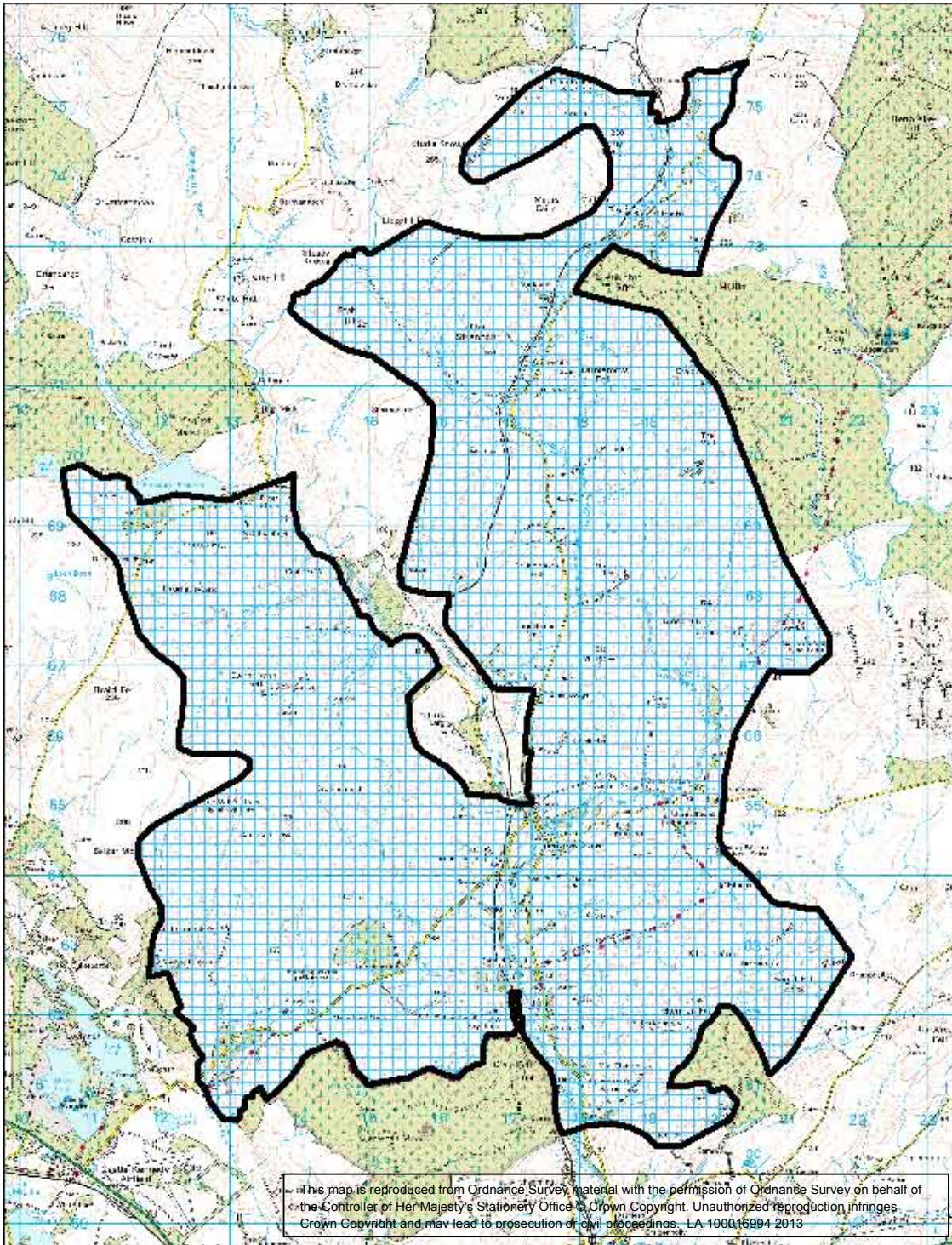
32. Annan Burgh NY 19 66

According to the Lanercost Chronicle, St. Malachy (c. 1148) cursed the Bruce family and Annan, as a result of which it ceased to be a burgh. This may have happened about the end of the 12th century when the river washed away part of Annan castle and Lochmaben became the chief place of Annandale. Annan, like Lochmaben a Bruce burgh in 1296, is not well documented for later times. Its earliest surviving charter is a re-erection by James V in 1538/9 with the usual privileges of a royal burgh. Annan was burnt by the English in 1317, by the Scots in 1376, and by the English again in 1516 and 1544 – the price for being close to the border. The key features are the medieval high street and burgage plots, the bridge and riverside, and the massive castle earthworks to the north of the town hall.

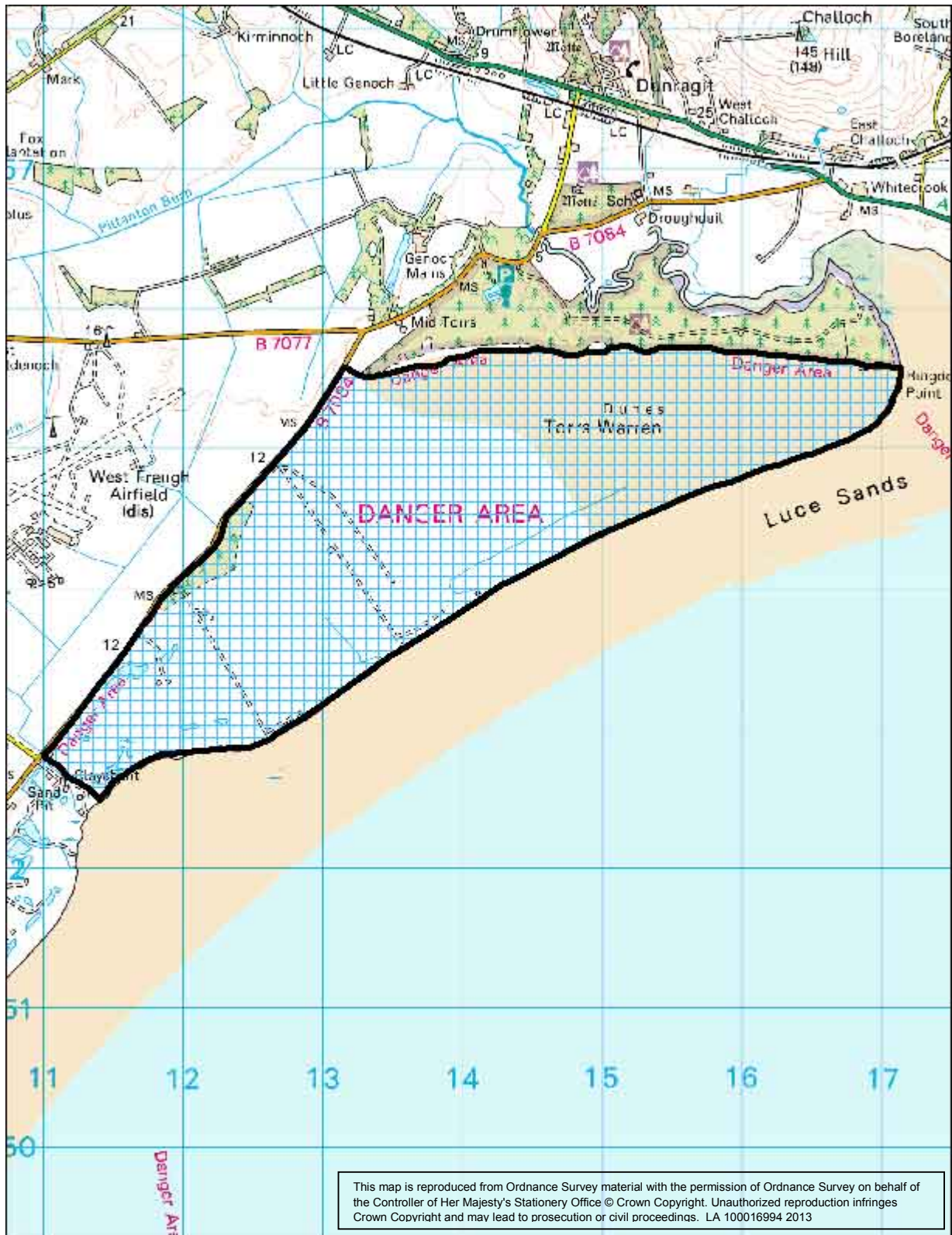
Excavations have revealed a boundary ditch on the east side of the town.

Maps

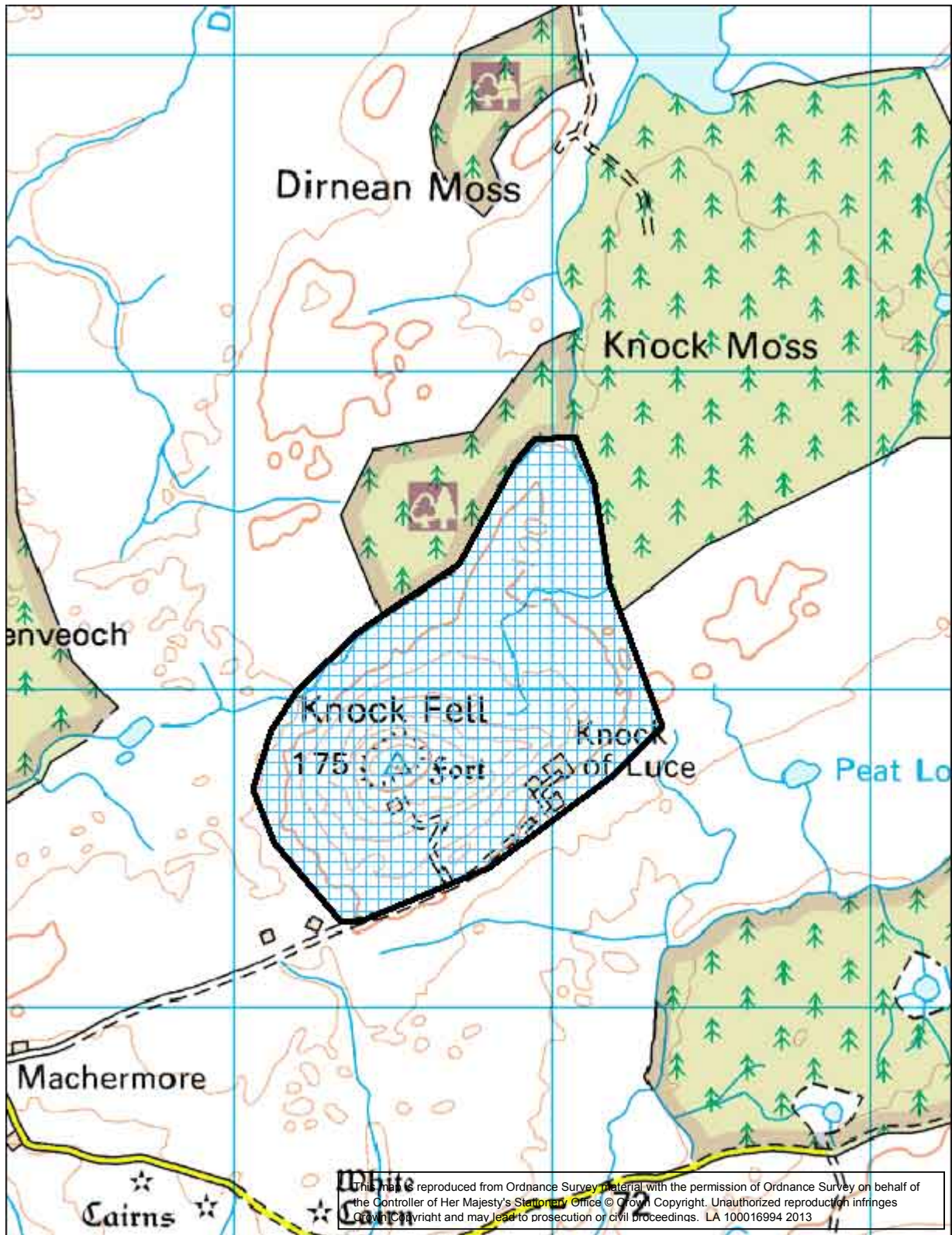
Rural ASAs



1. East Rhins



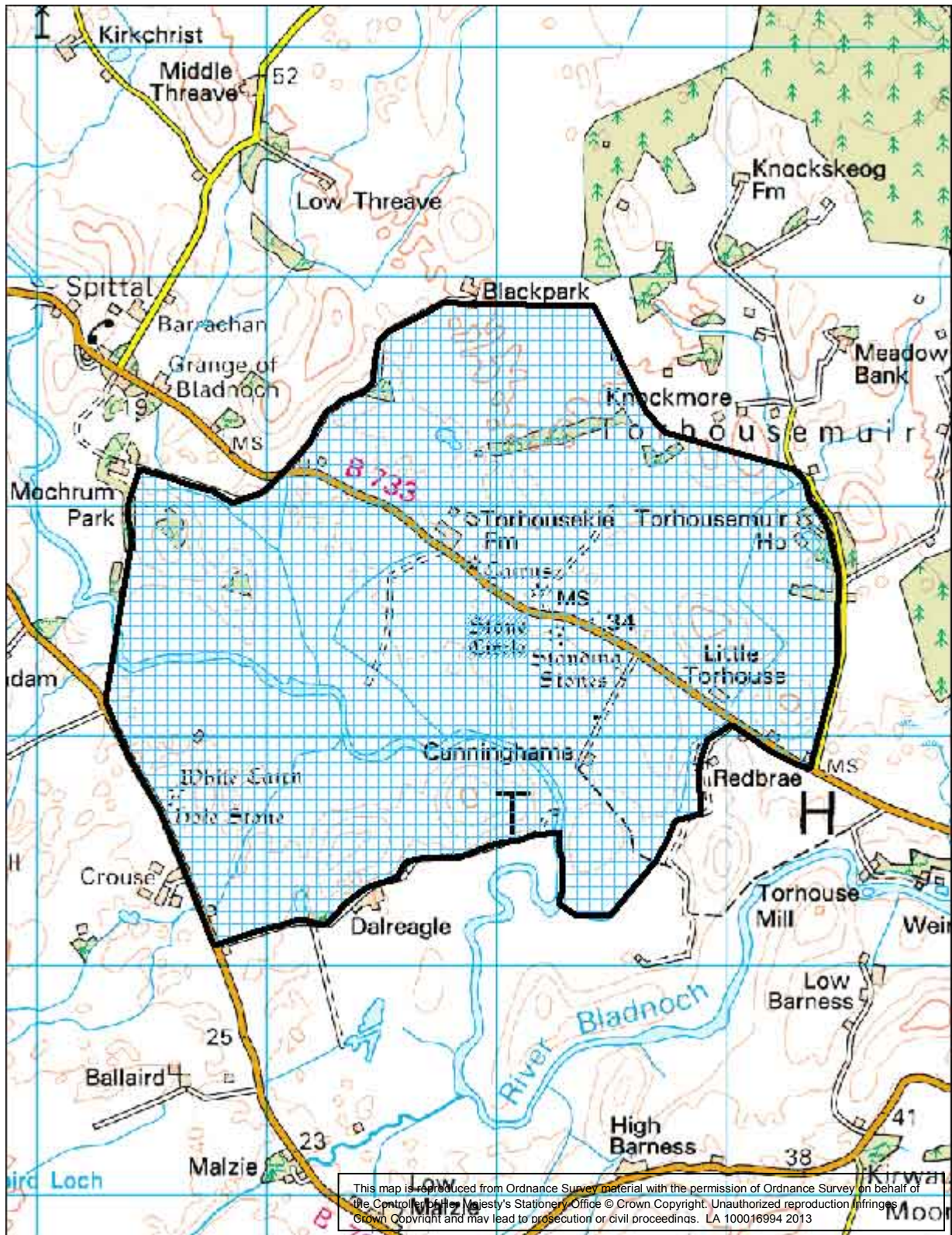
2. Torr's Warren



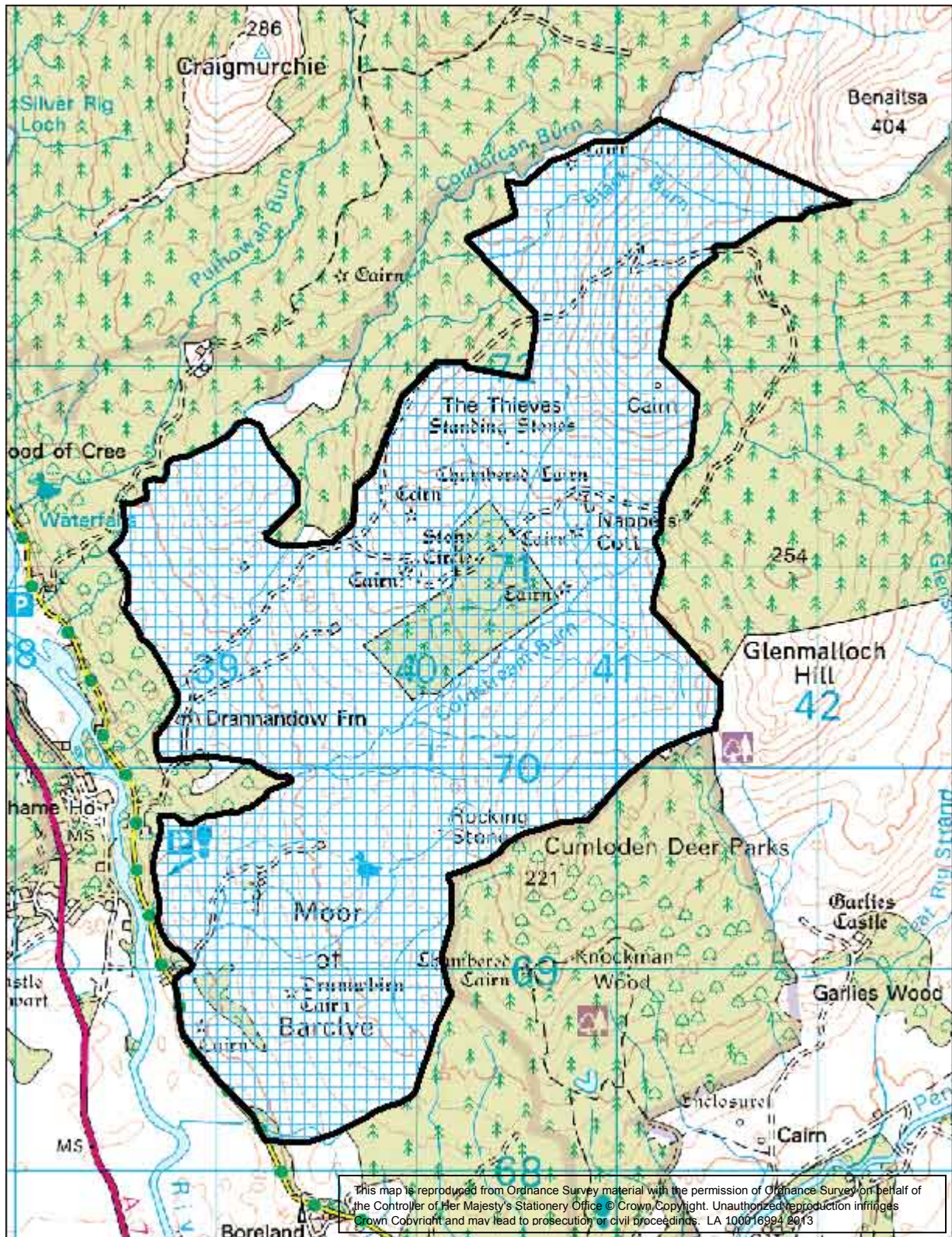
3. Knock Fell



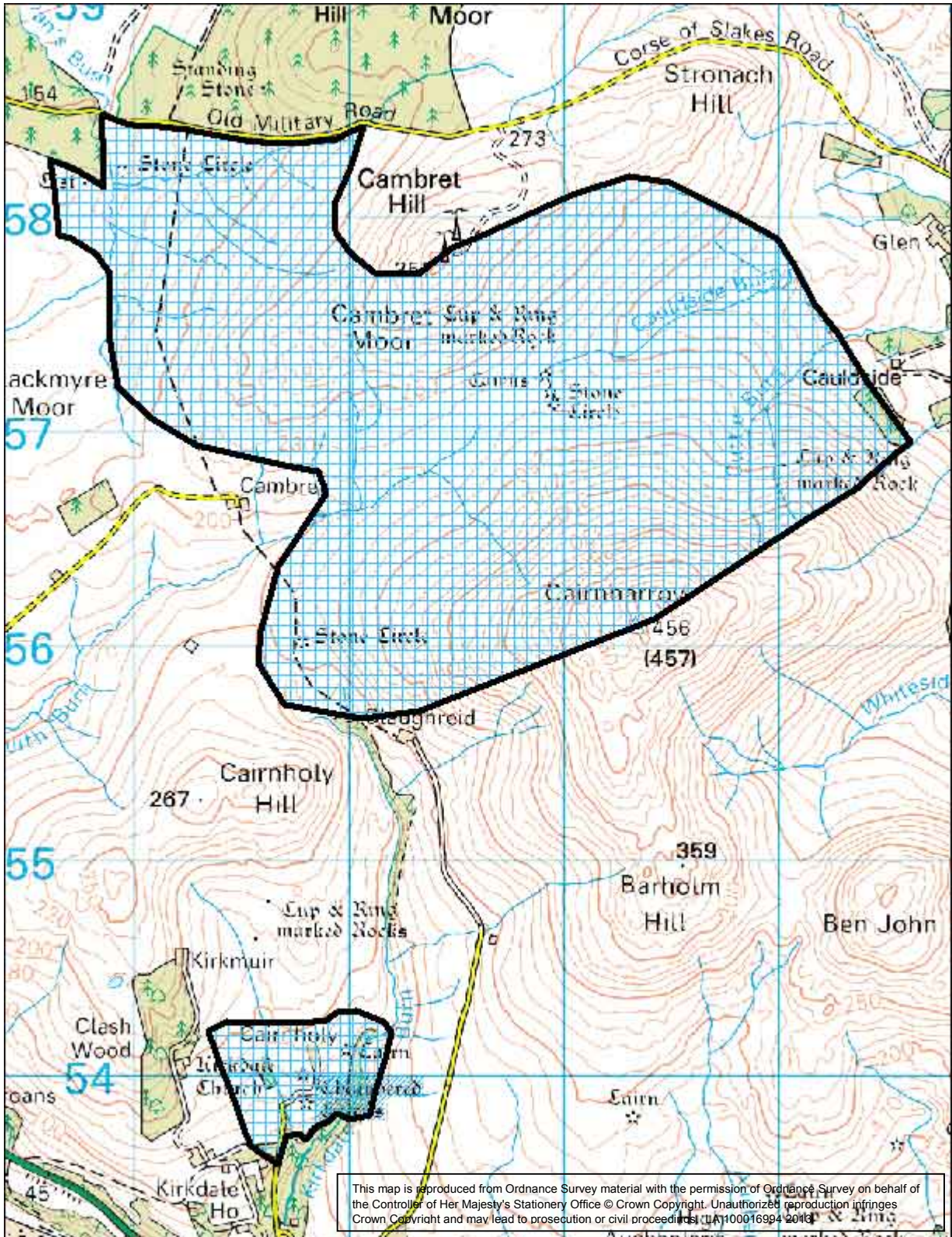
4. Changue Fell



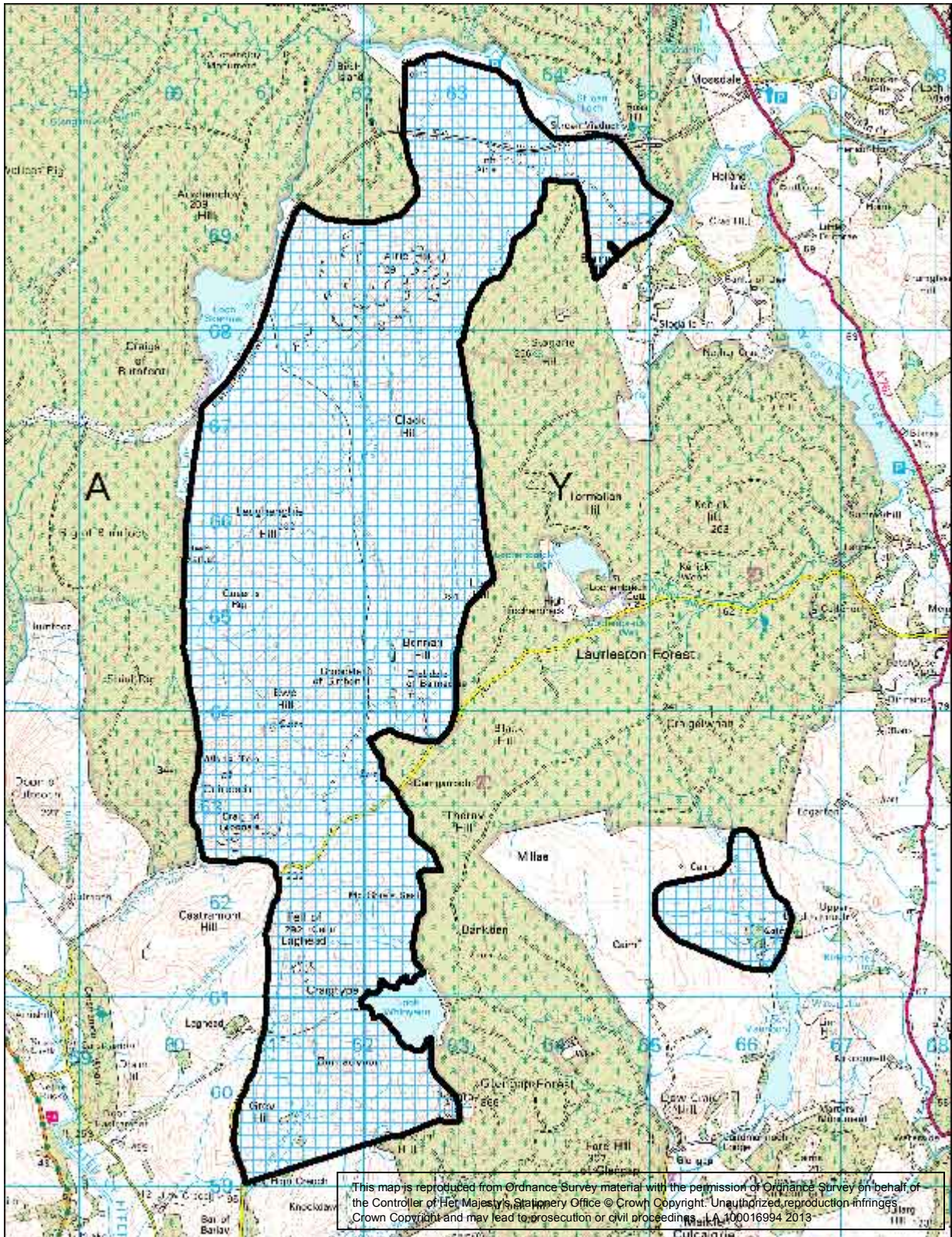
5. Torhouse



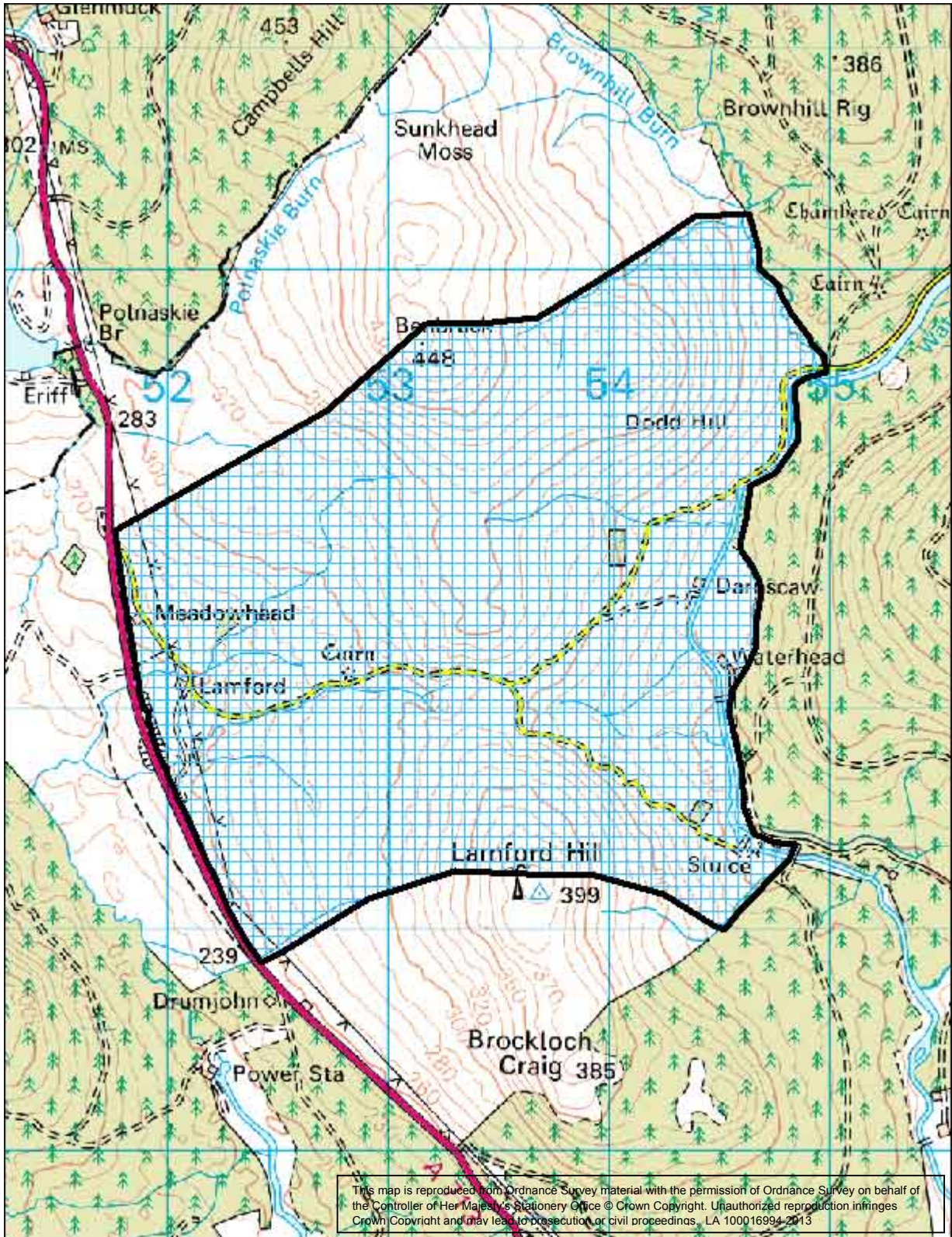
6. Coldstream Burn



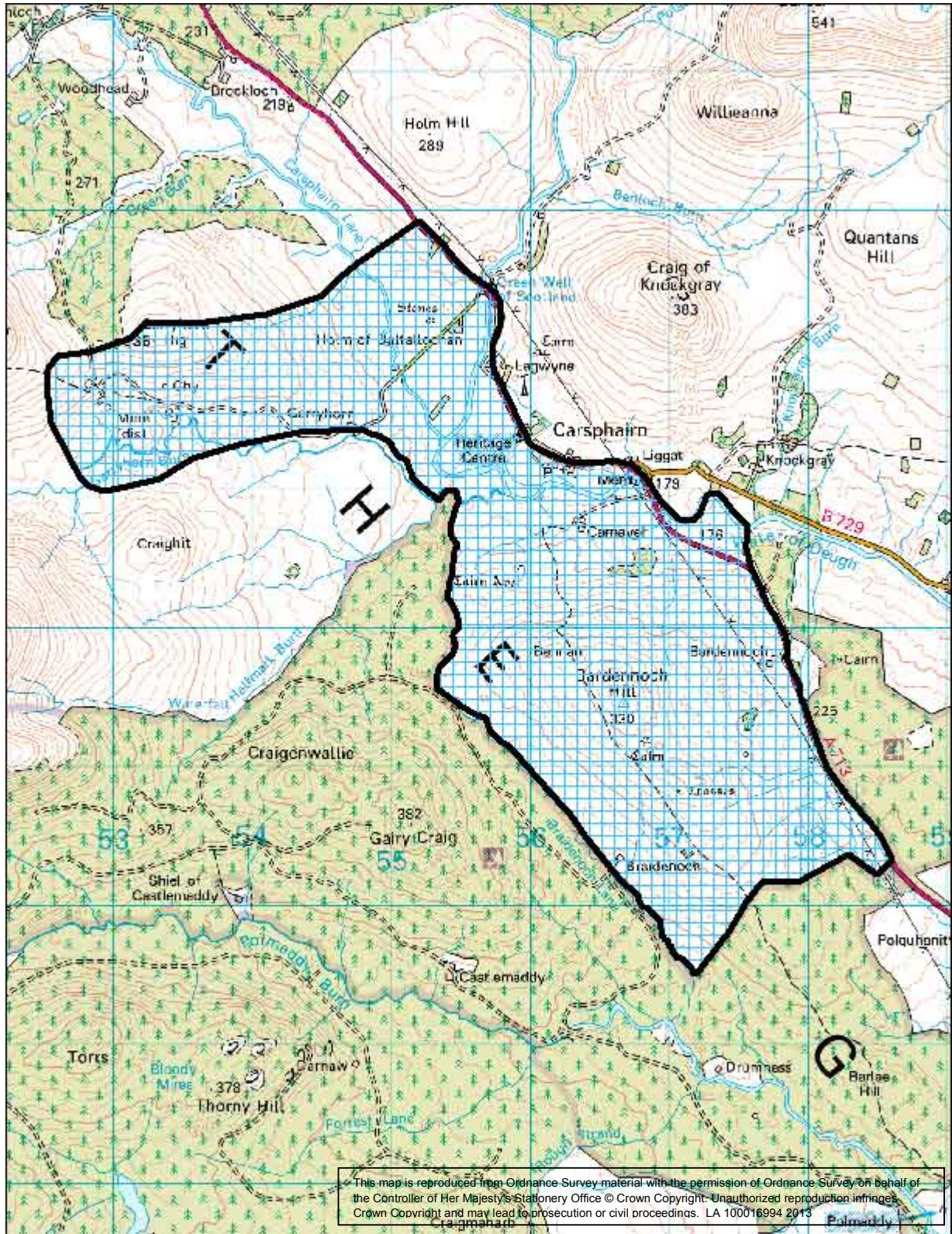
7. Cambret Moor and 8. Cairnholy



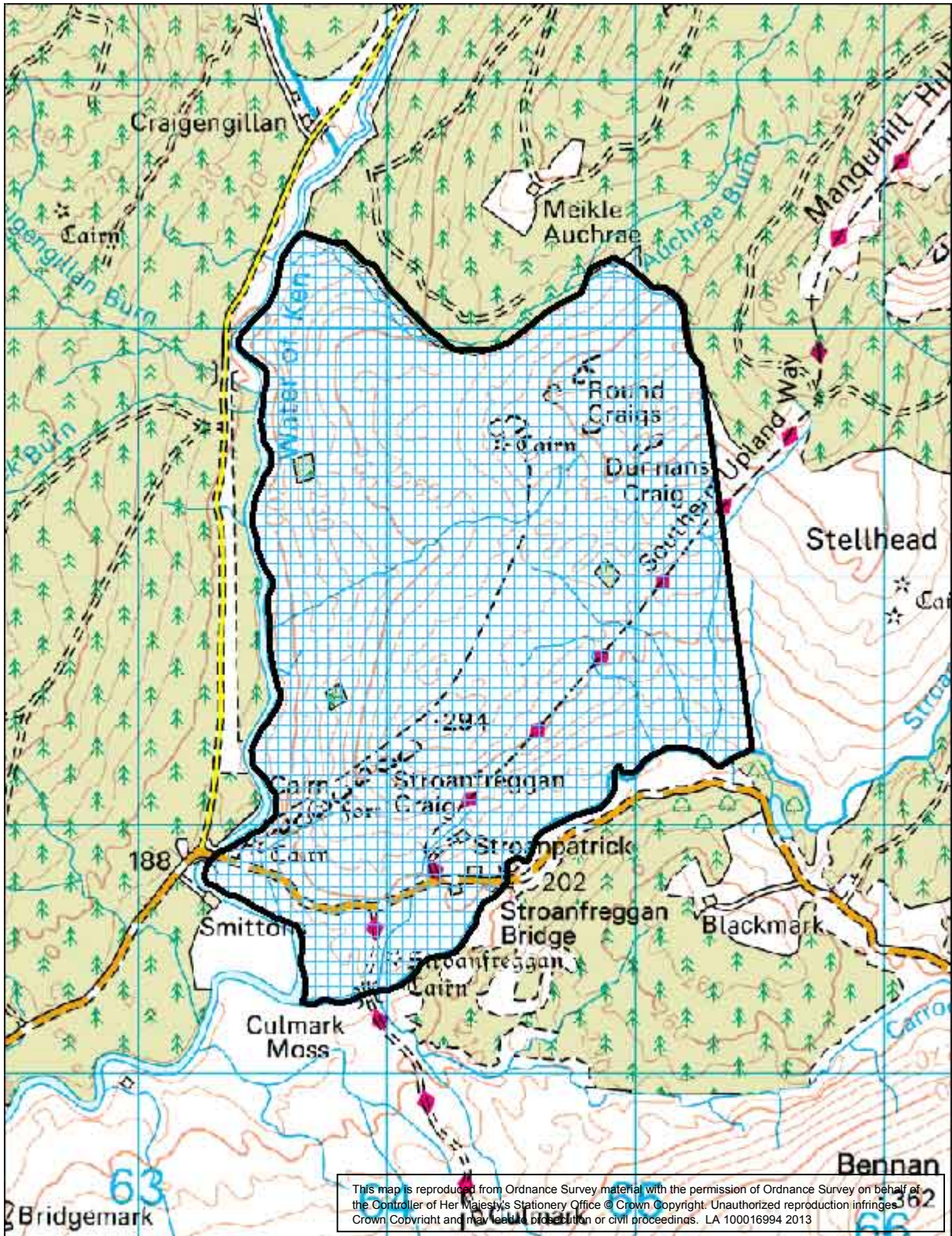
9. Grobdale and 10. Loch Mannoich



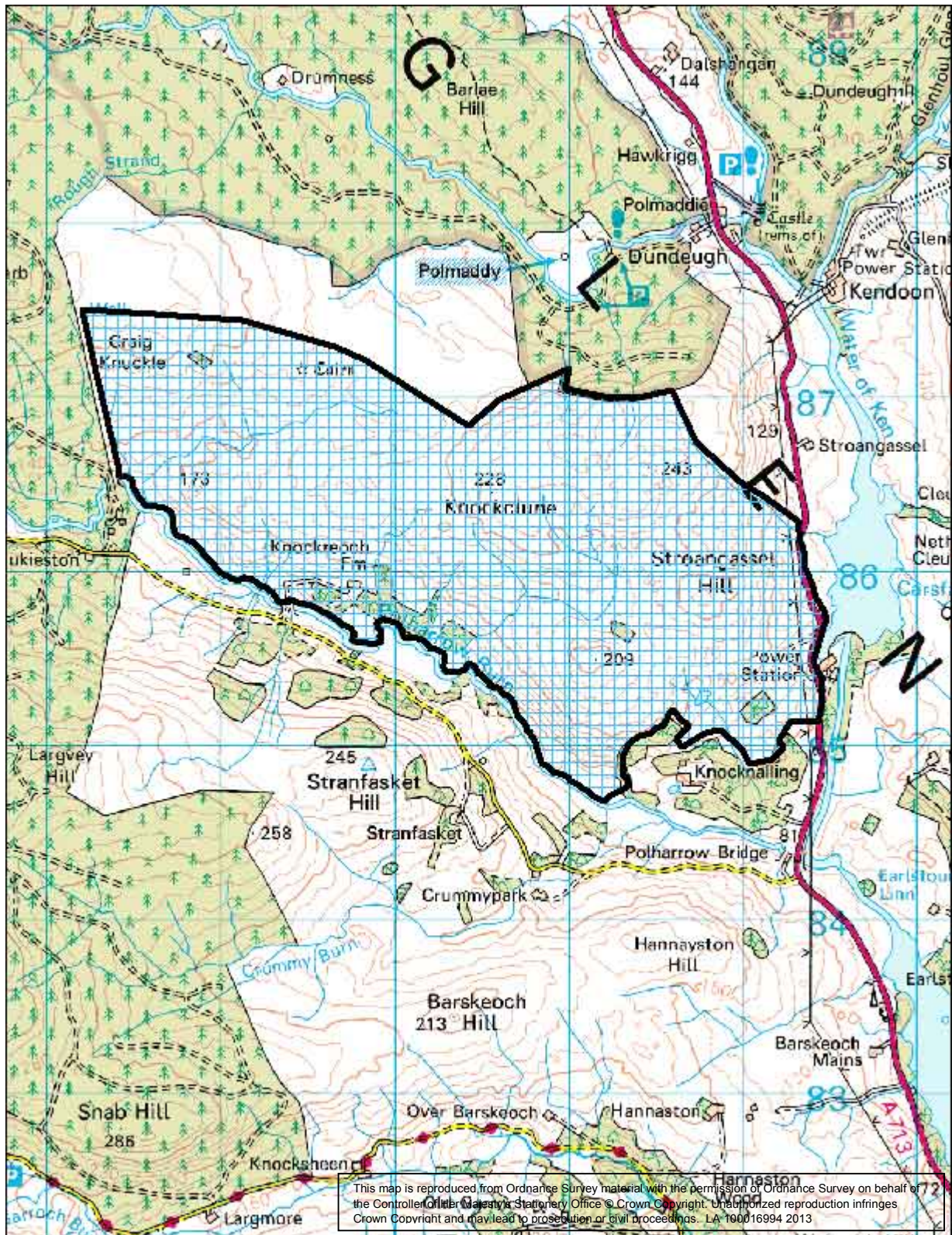
11. Water of Deugh



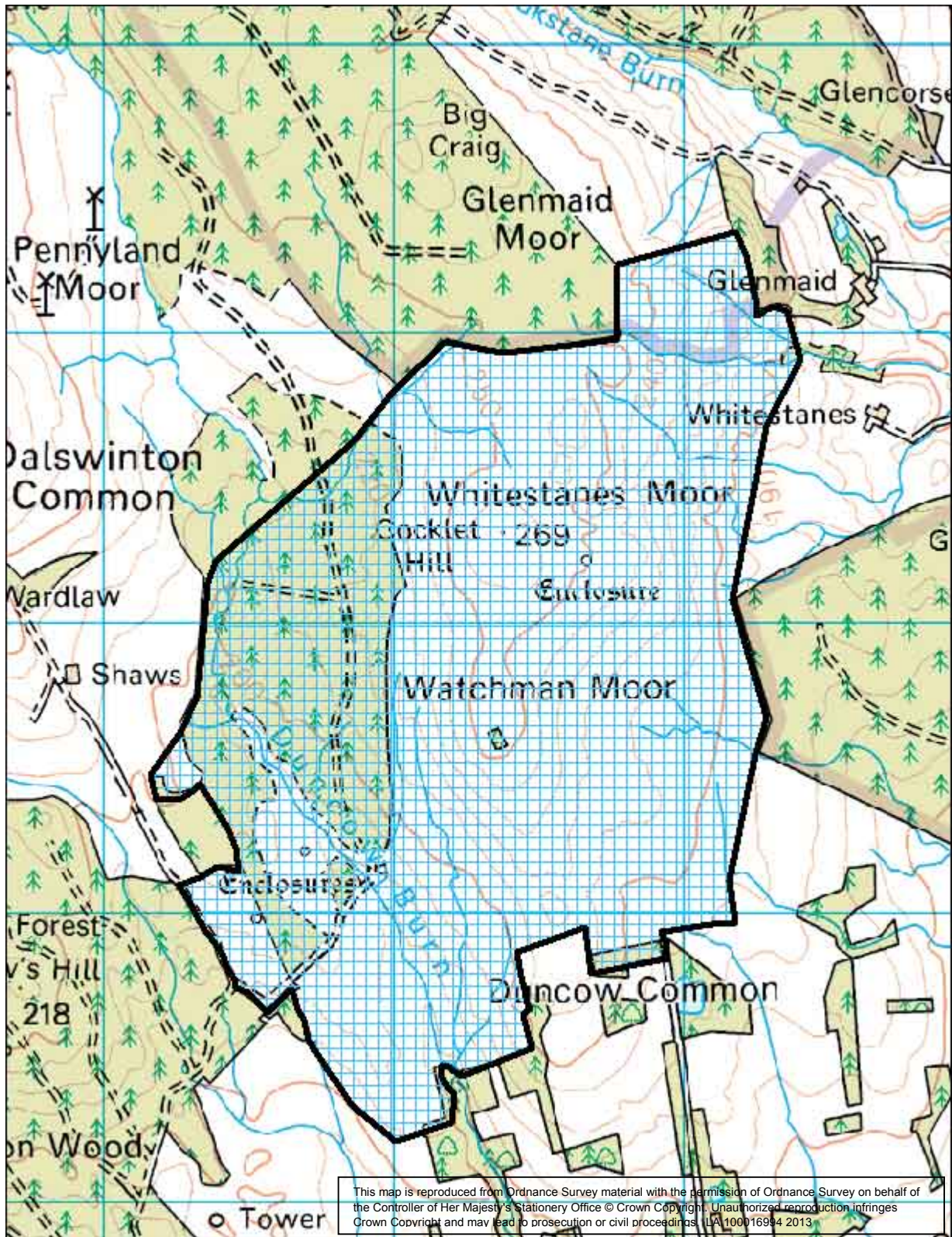
12. Bardennoch – Garryhorn



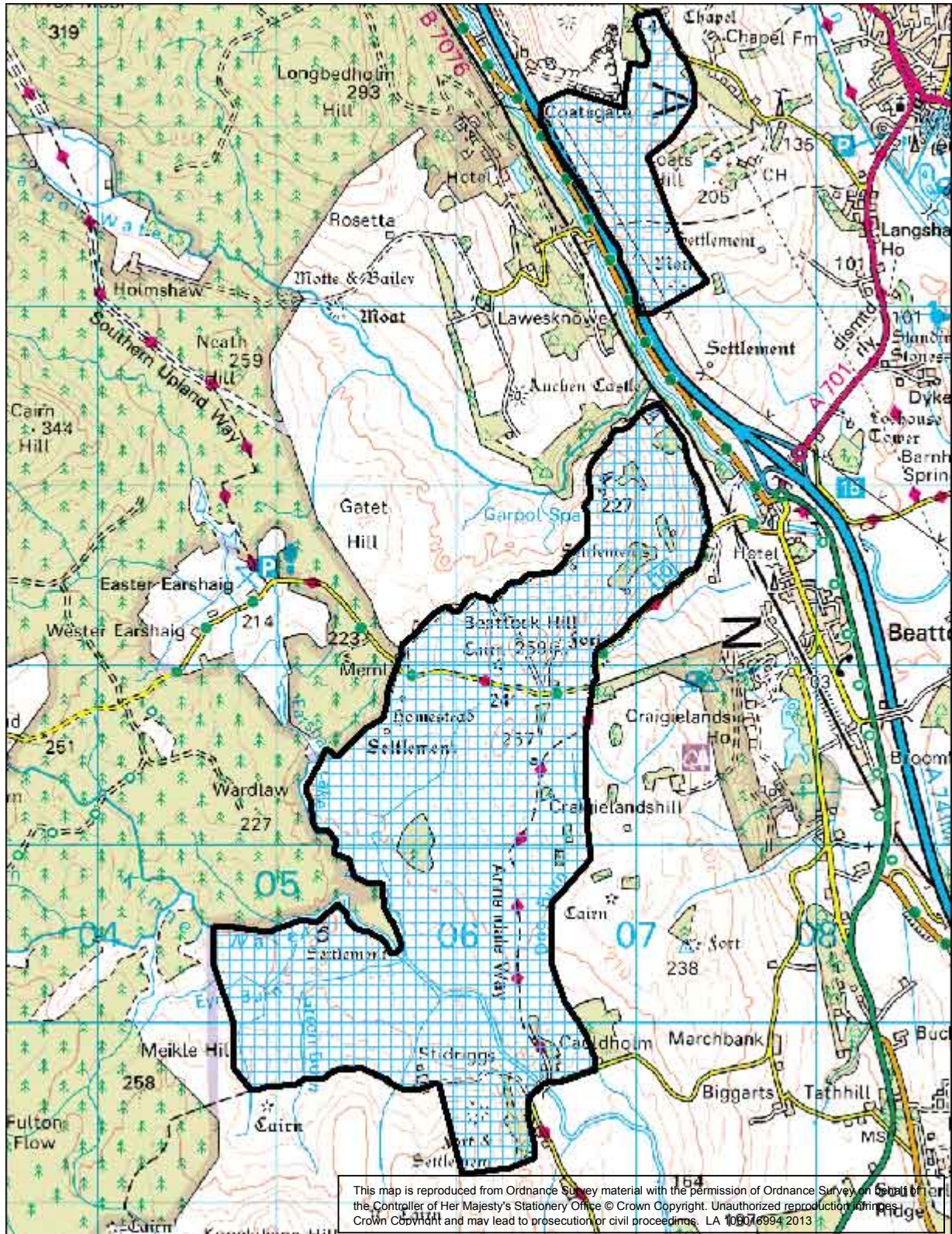
13. Stroanfreggan



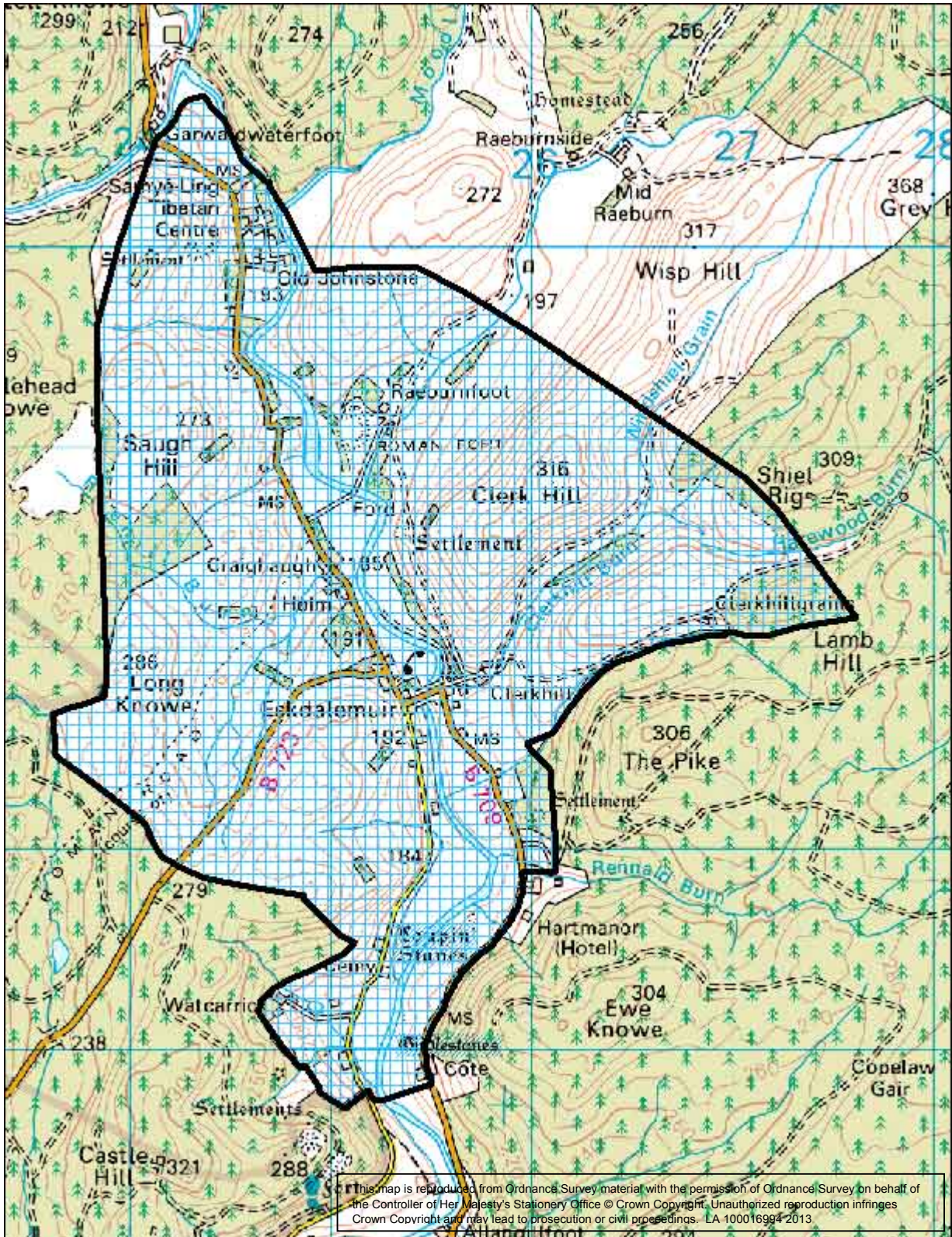
14. Polharrow Burn



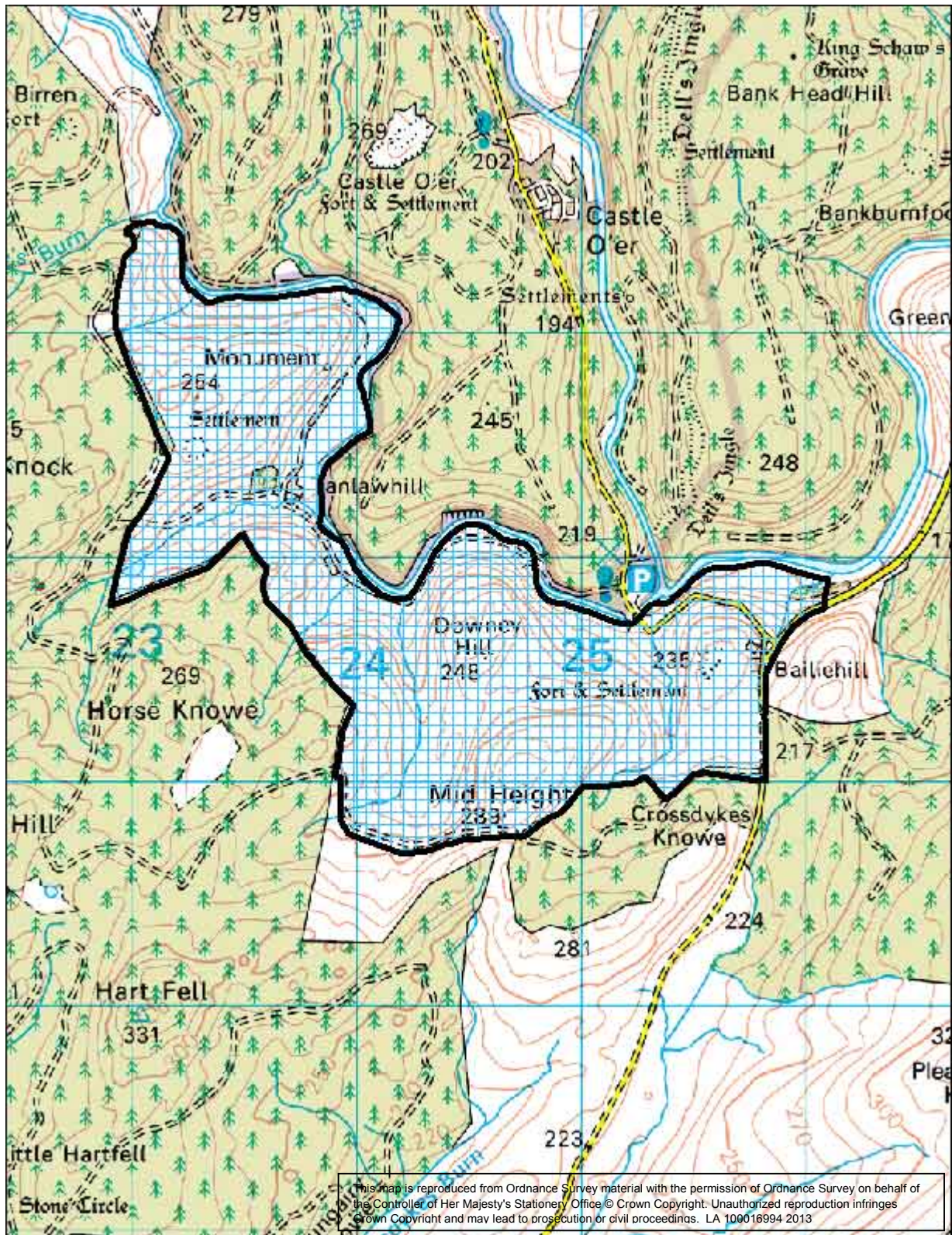
15. Whitestanes Moor



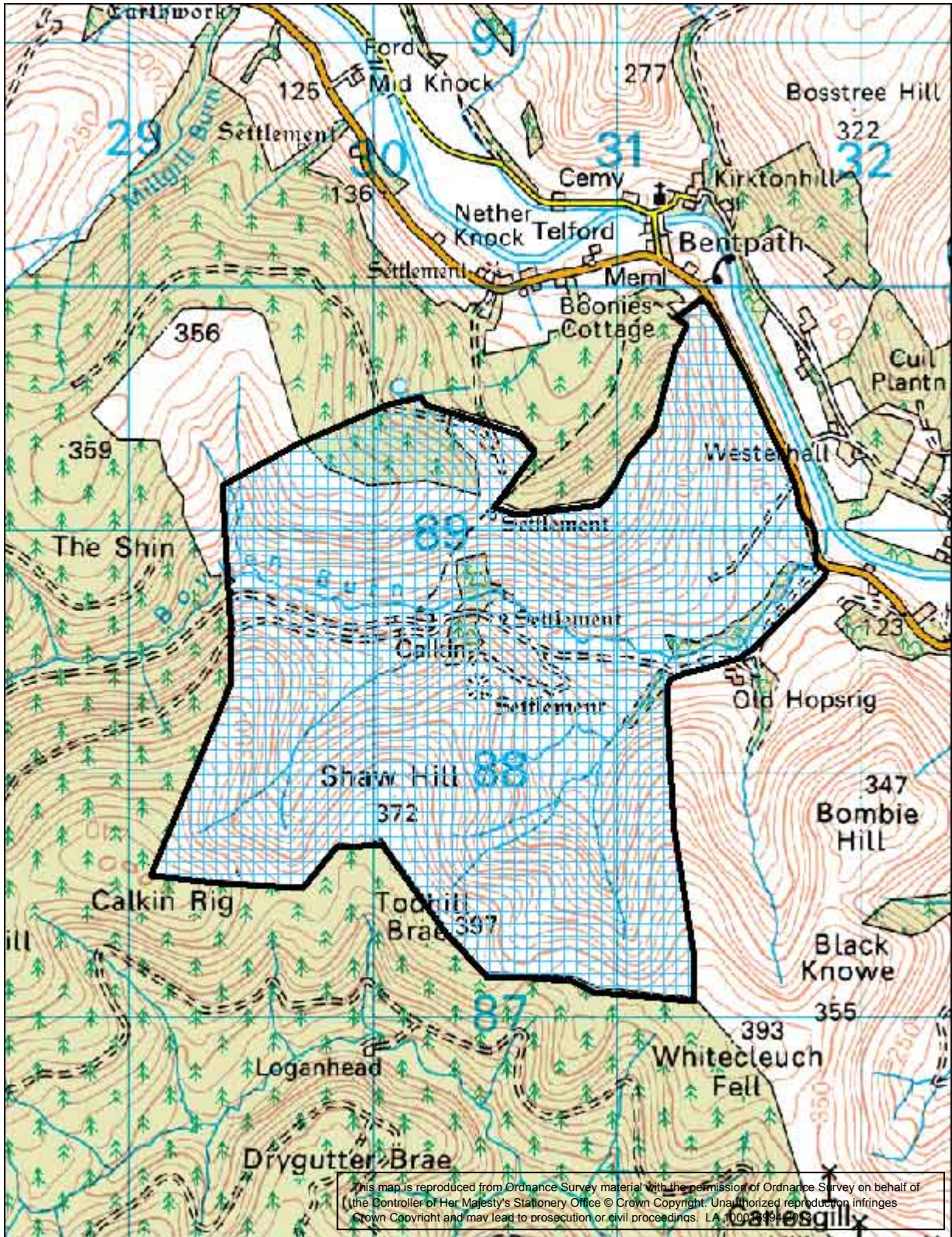
16. Beattock Hill



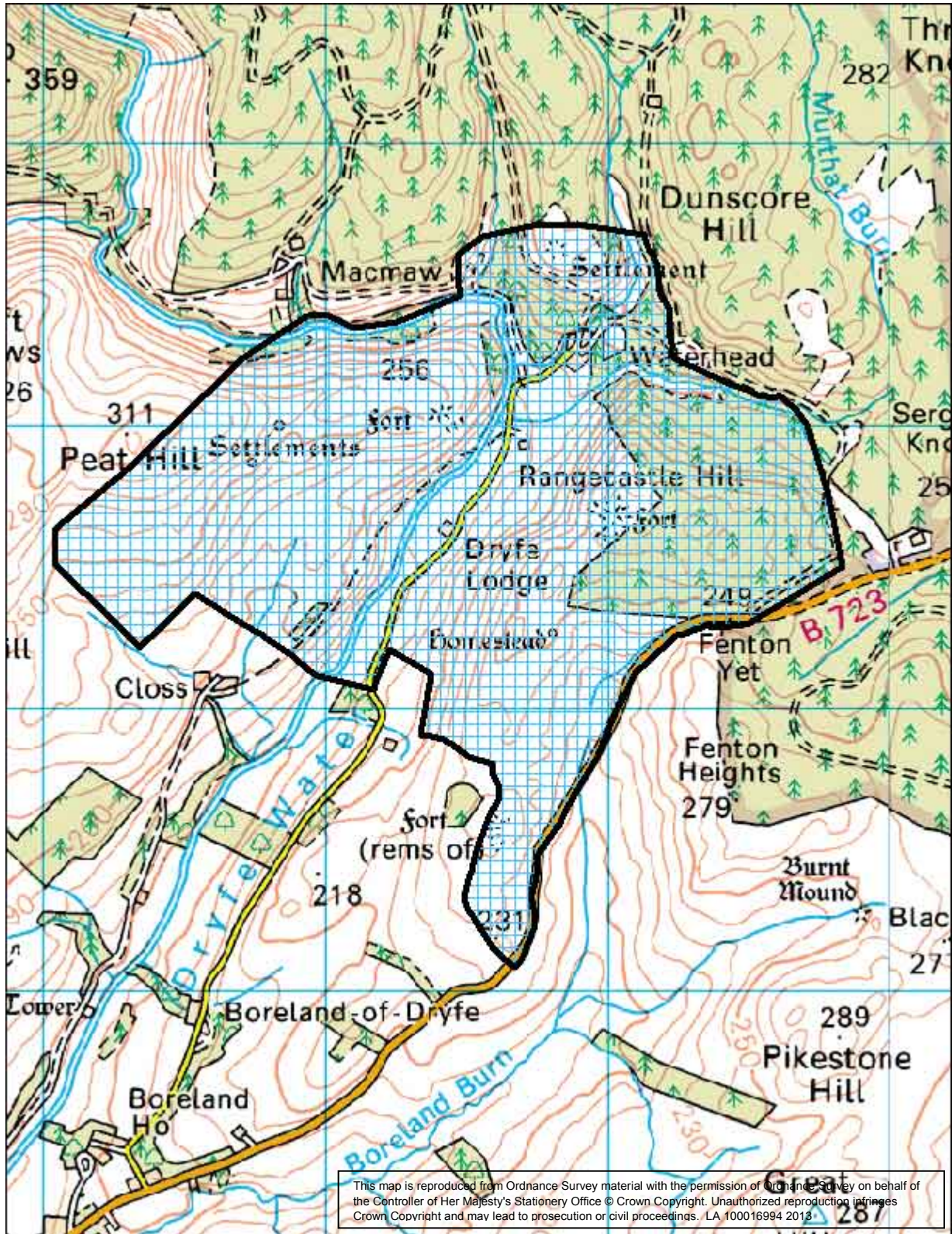
17. Raeburnfoot



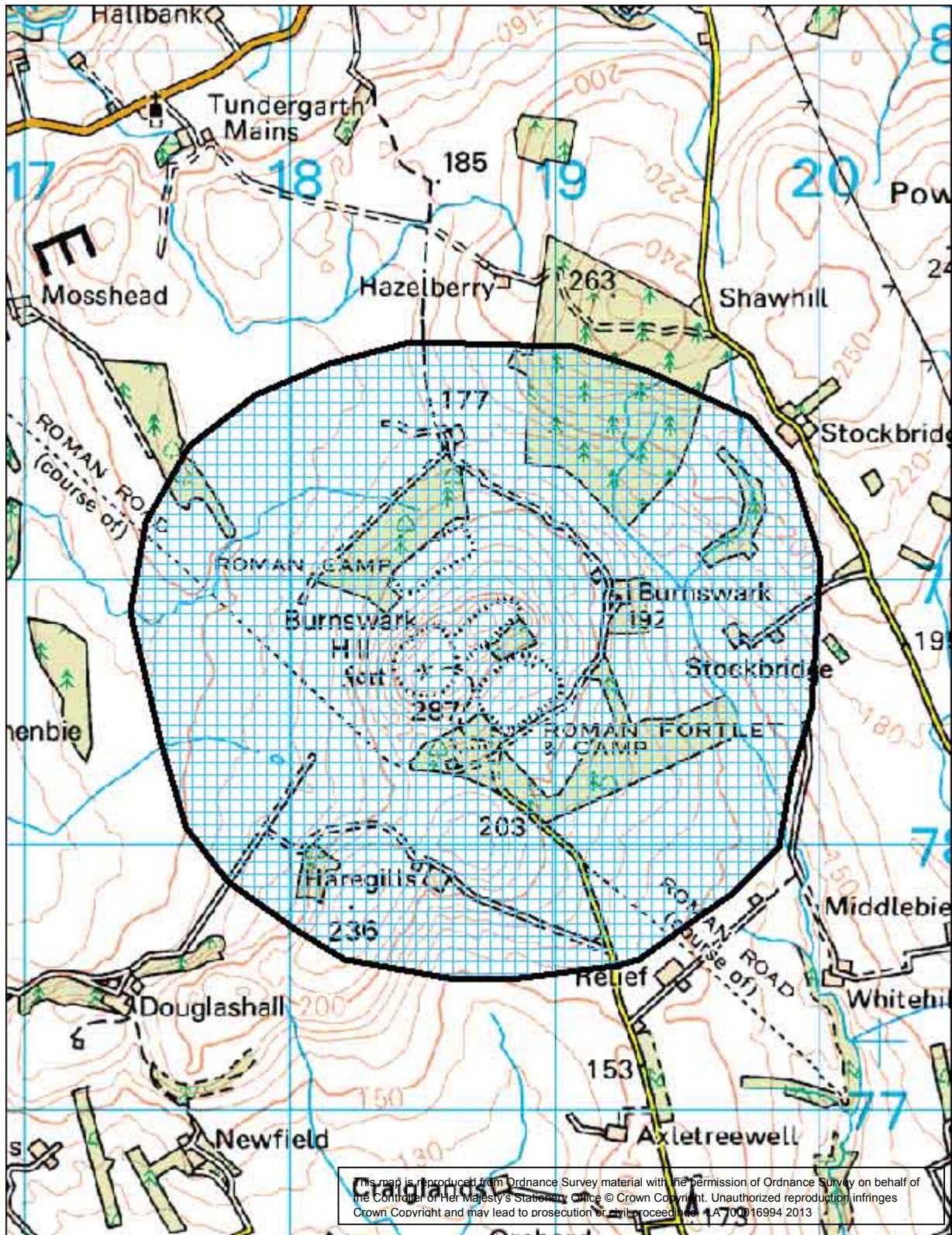
18. Tanlawhill



19. Boyken Burn

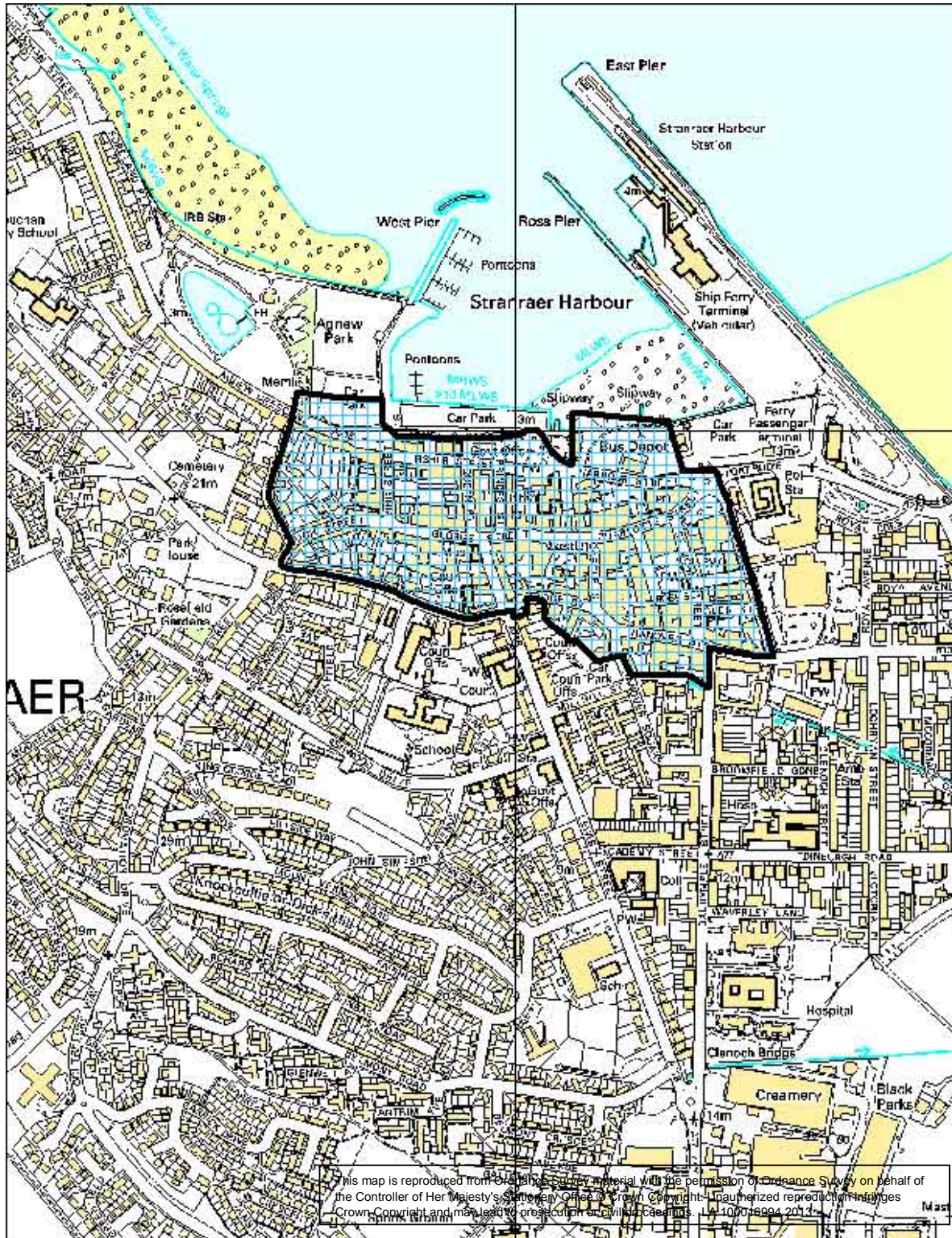


20. Dryfe Water

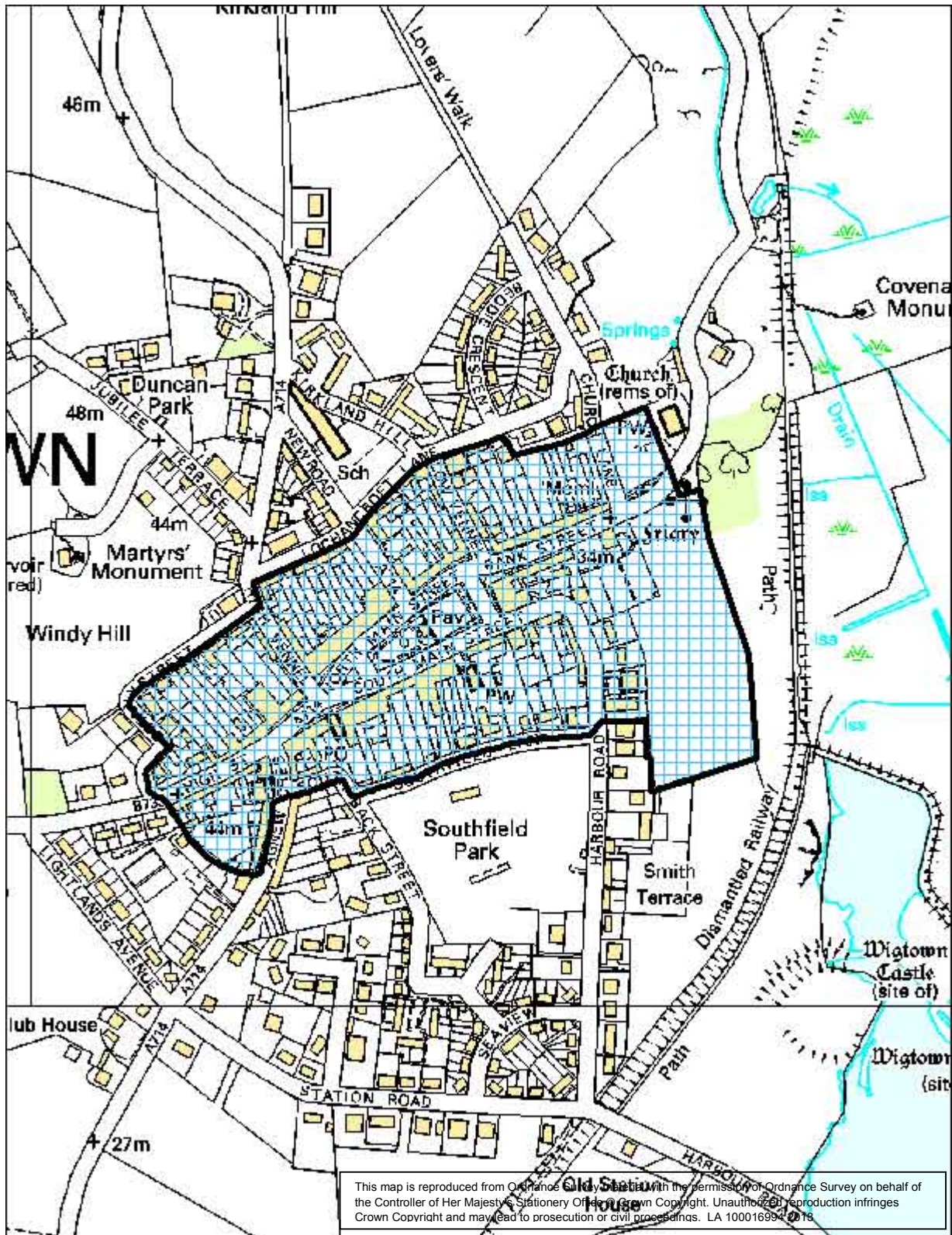


21. Burnswark

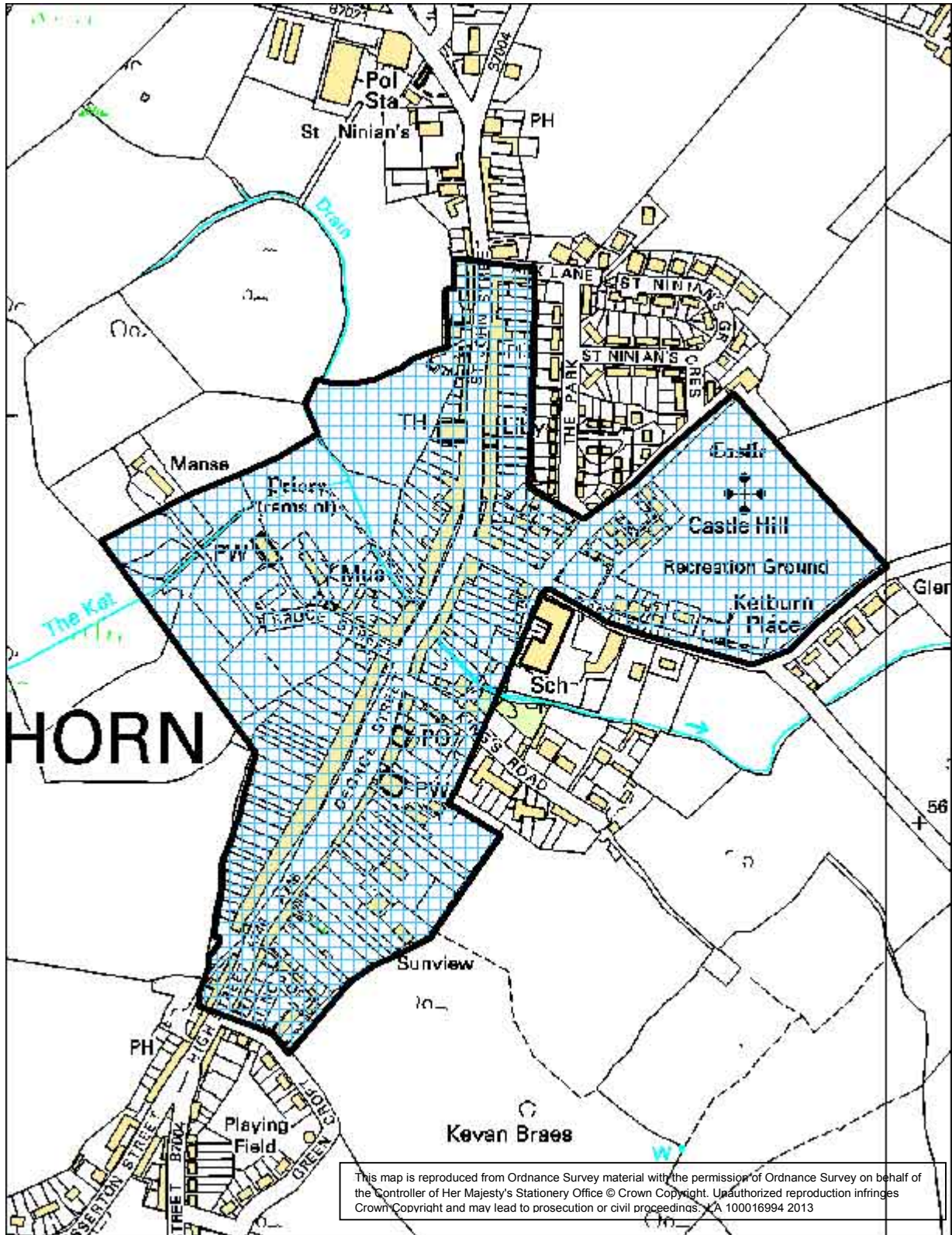
Settlement ASAs



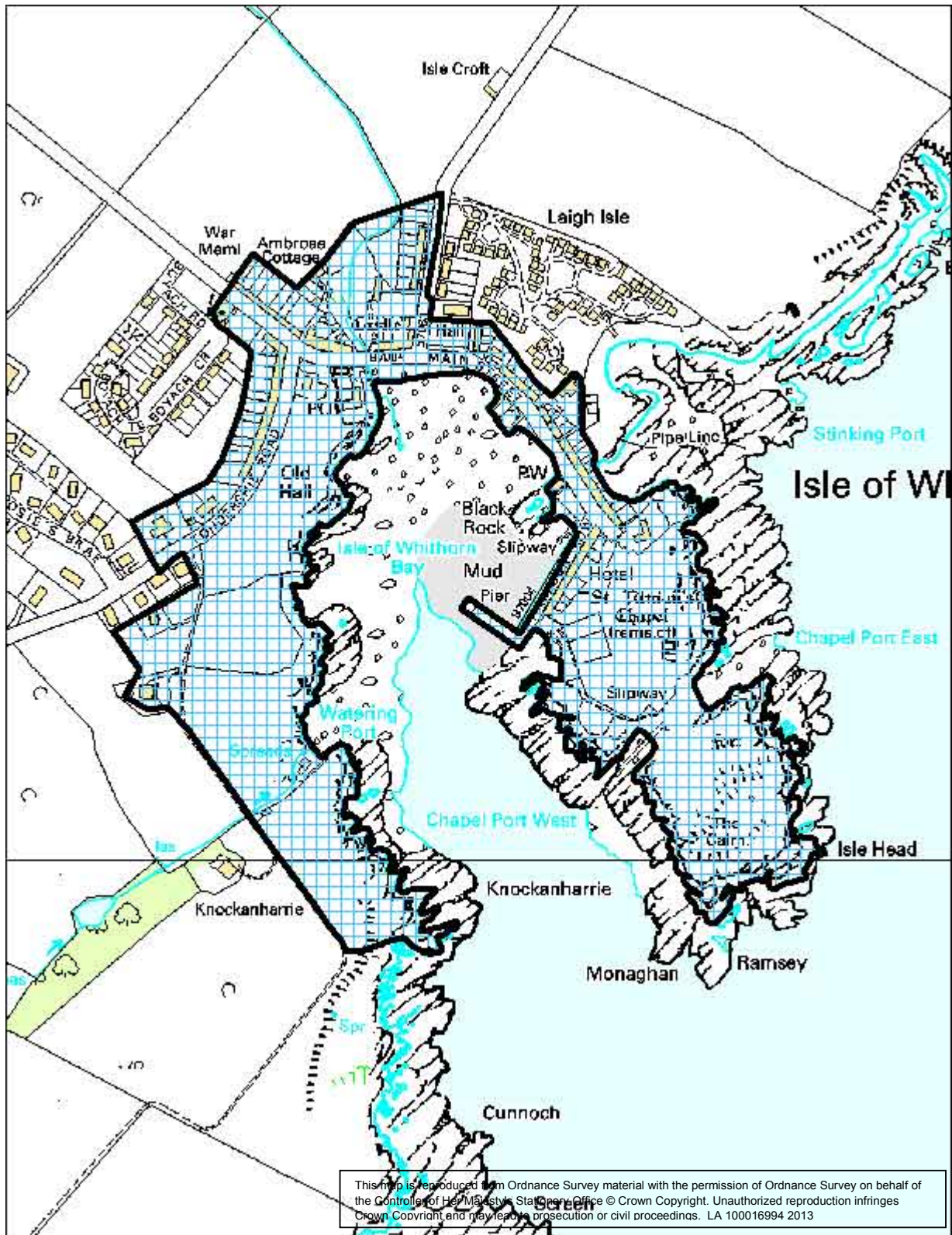
22. Stranraer



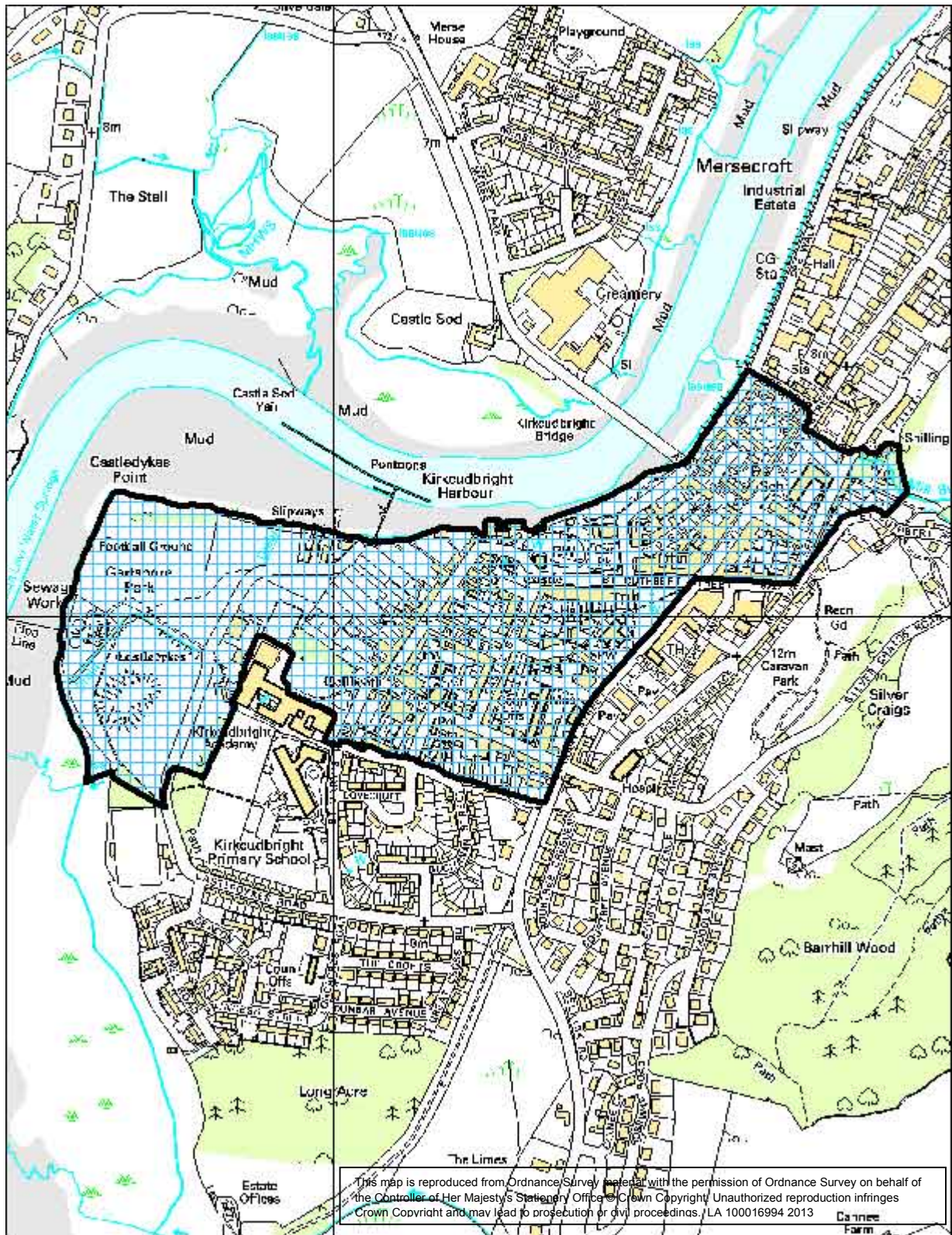
23. Wigtown



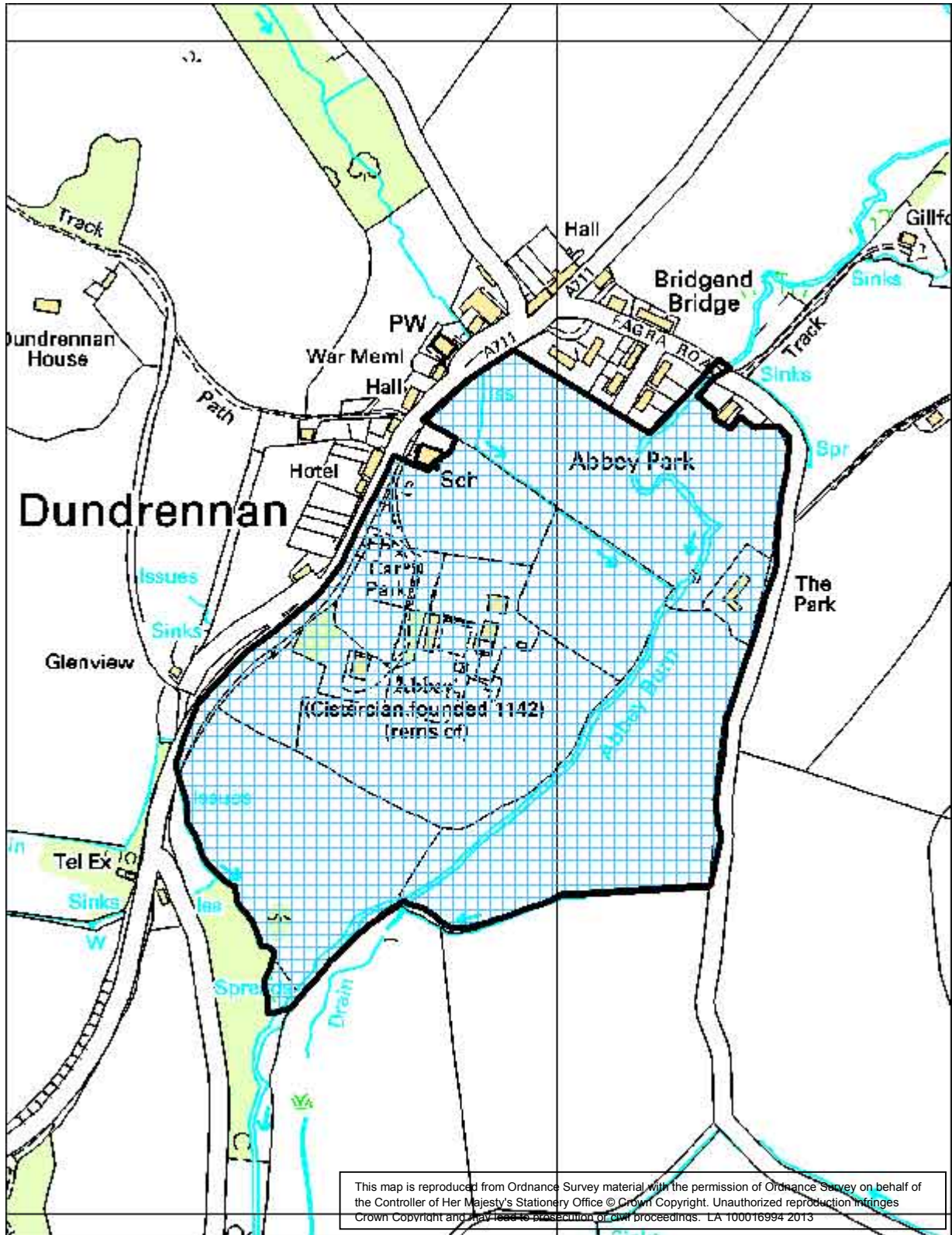
24. Whithorn



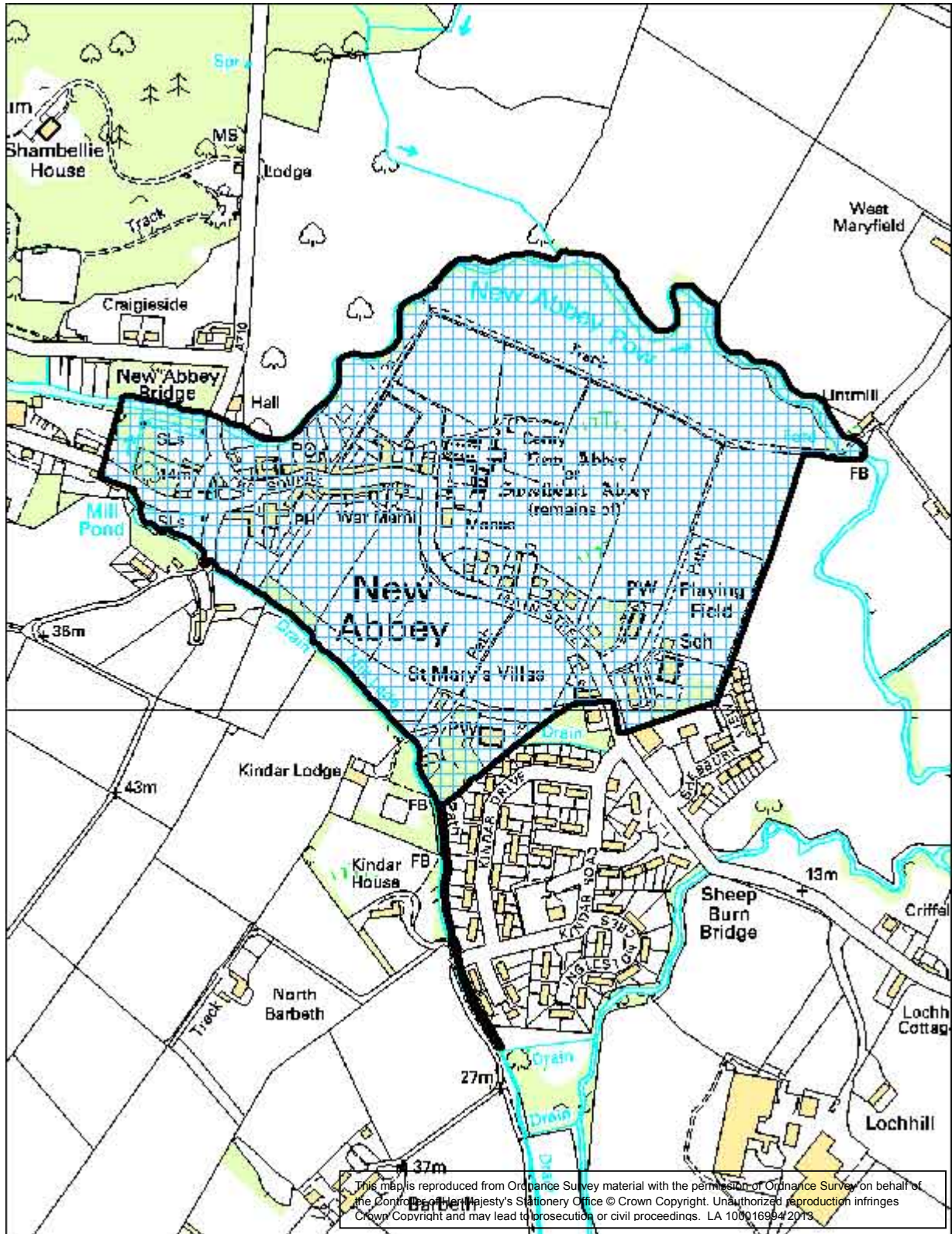
25. Isle of Whithorn



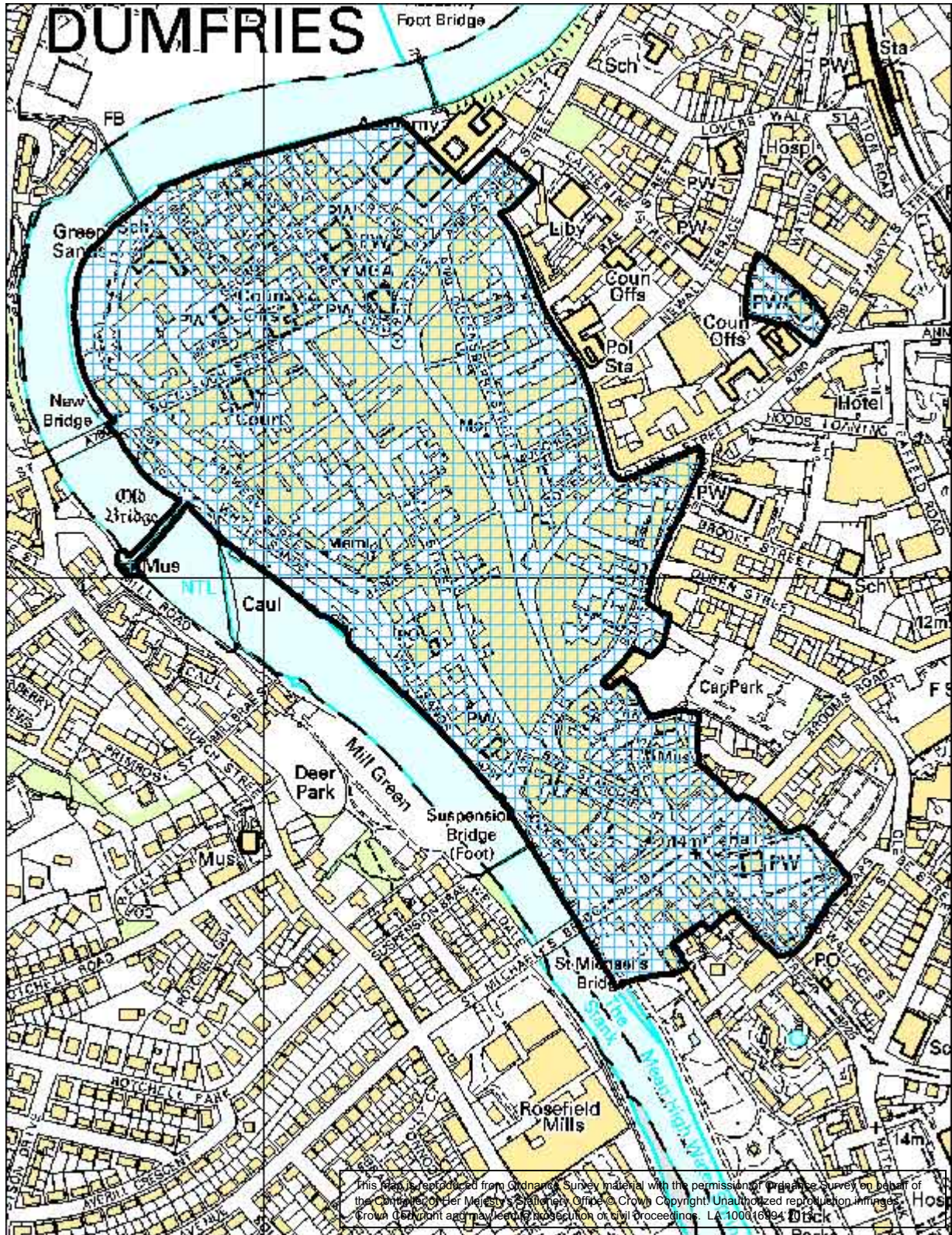
26. Kirkcudbright



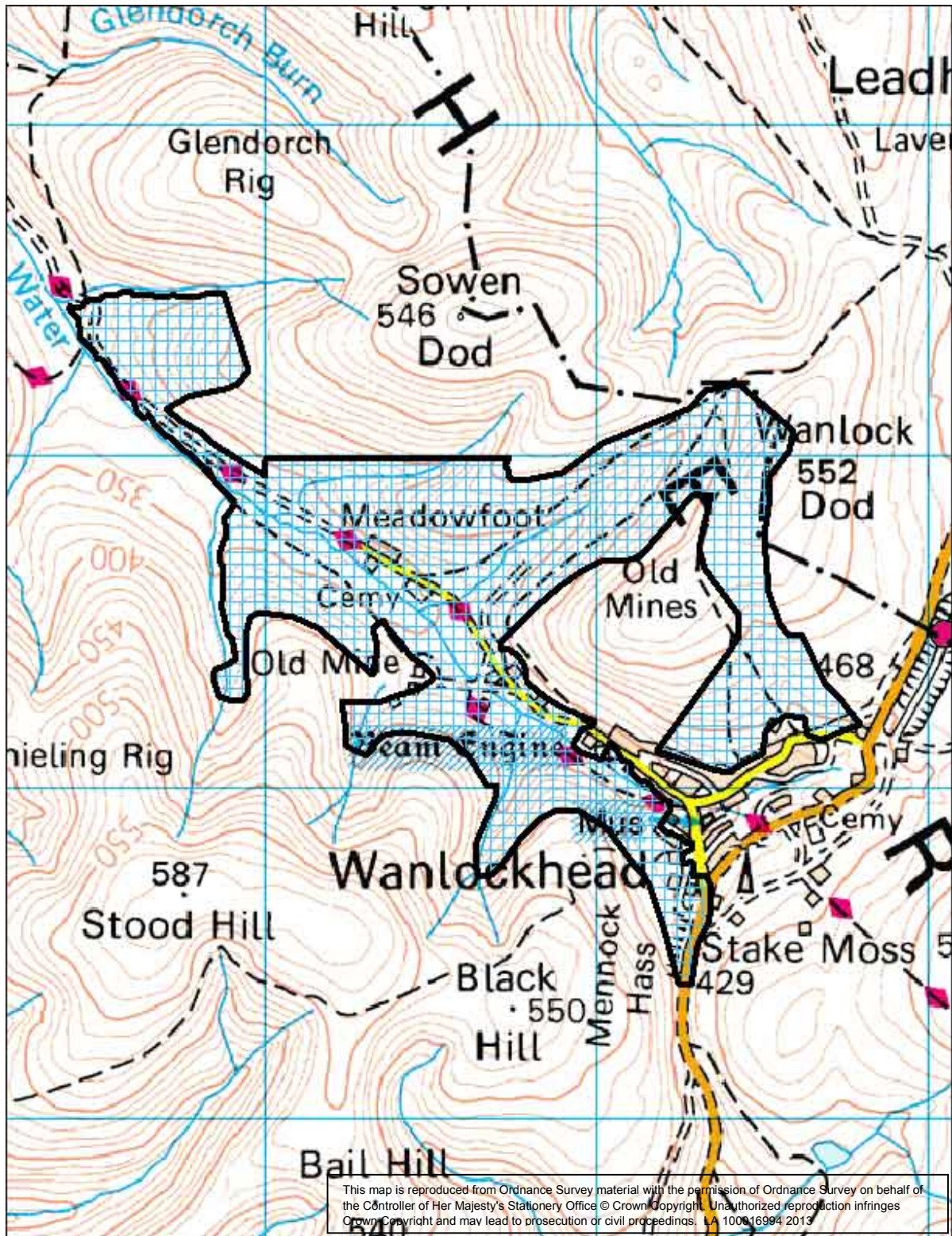
27. Dundrennan



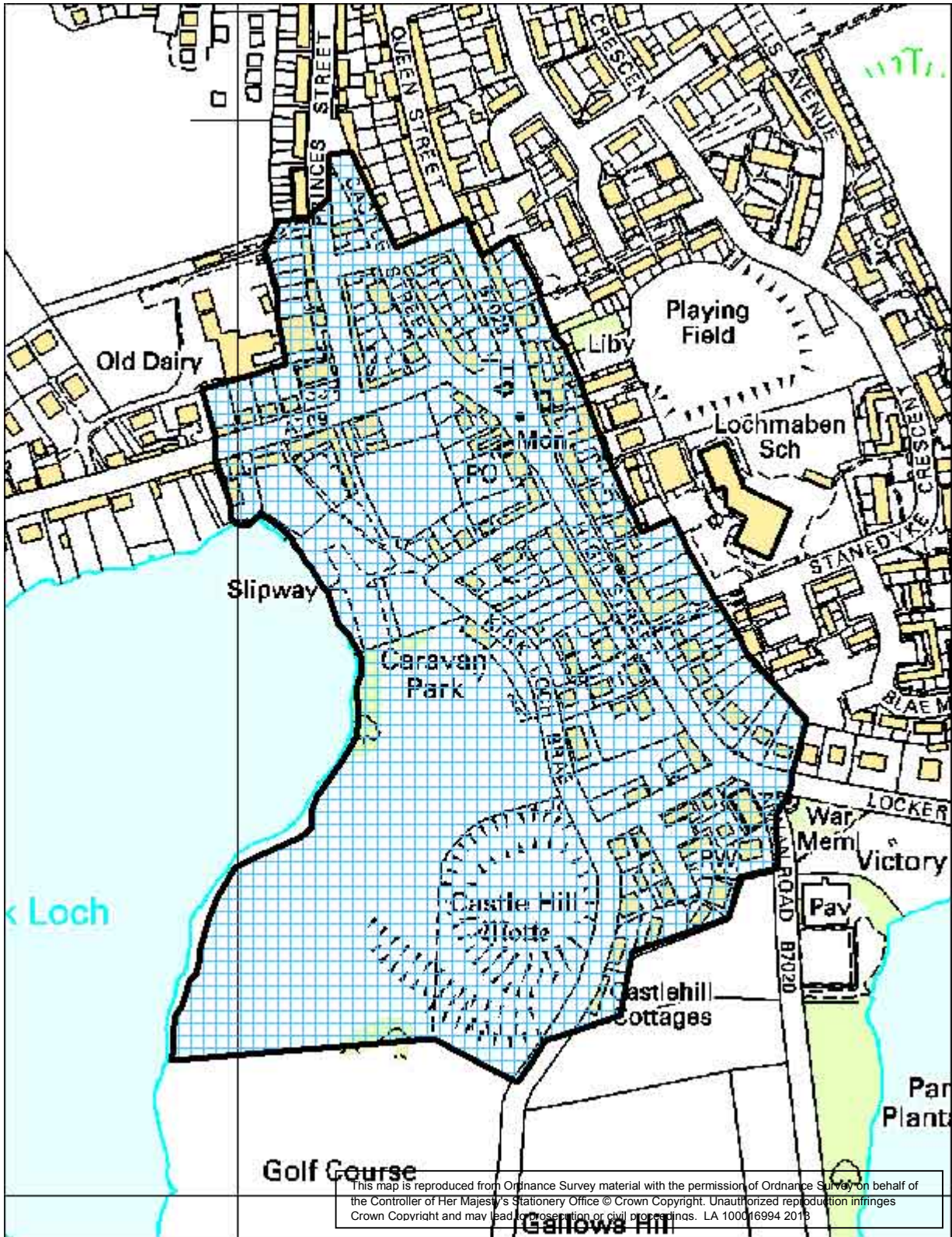
28. New Abbey



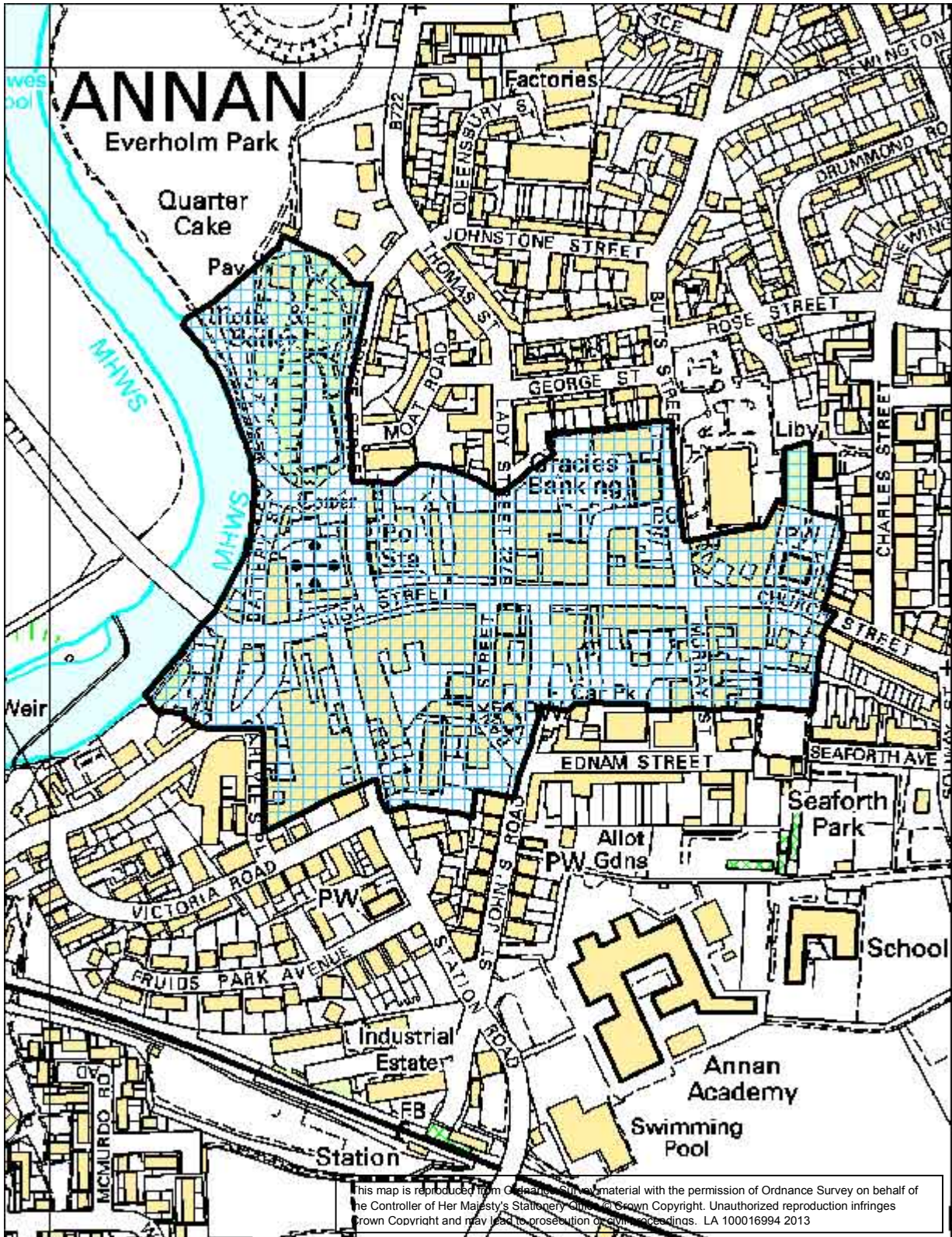
29. Dumfries



30. Wanlockhead



31. Lochmaben



32. Annan

Contacts:

Council Archaeology Service - Telephone: 030 3333 3000

Further information:

Government Policy and Guidance:

Scottish Historic Environment Policy (SHEP) December 2011

Planning Advice Note 2/2011 Planning and Archaeology

Managing Change in the Historic Environment: Setting, Historic Scotland, 2010.