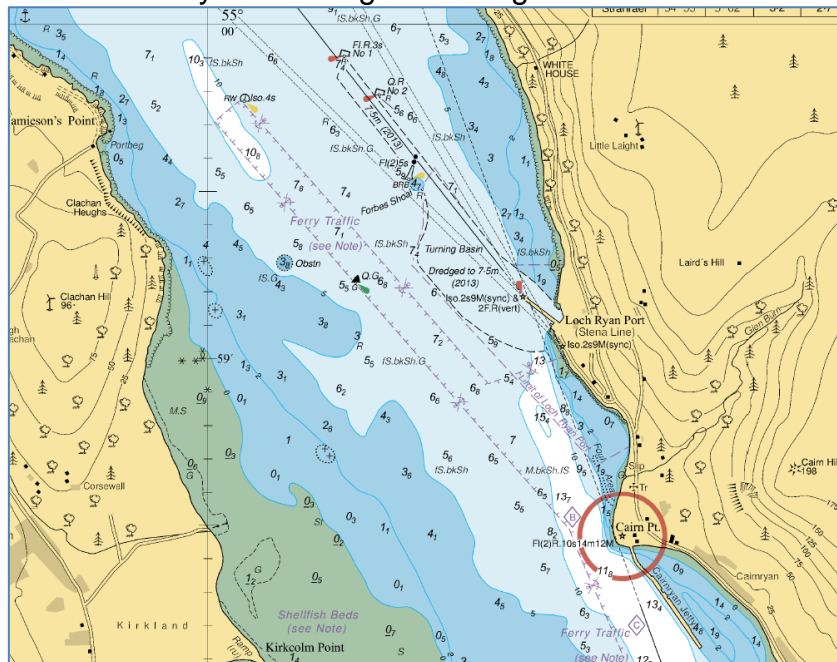


## **GUIDE to VESSELS ENTERING LOCH RYAN**

This Guide was developed by Dumfries and Galloway Council in consultation with Stenaline and P&O Ferries and their respective Statutory Harbour Authorities within Loch Ryan. It has no standing in law but following the key principles of common sense, sound seamanship and common courtesy and drawing on the experience of many users of Loch Ryan over many years, it provides advice on how to navigate safely through Loch Ryan.

Nothing in this Guide relieves the master/skipper from their responsibility for the safety of their vessel and all those on board. Similarly, nothing in this Guide constitutes a deviation from or variation to the International Regulations for Preventing Collisions at Sea 1972 as amended (IRPCS) or relieves the master/skipper from their responsibility for complying with the IRPCS.

Loch Ryan showing Anchoring Prohibited area



© Crown Copyright and/or database rights. Reproduced by permission of the Controller of her Majesty's Stationery Office and the UK Hydrographic Office ([www.ukho.gov.uk](http://www.ukho.gov.uk)). Not to be used for navigation.

For the purposes of this Guide, the following expressions shall have the associated meanings as described below:-

- **Large Vessel:** A vessel of more than 20 metres in length overall and/or a vessel with a draft (draught) in excess of three (3) metres.
- **Ferry Traffic Channel:** The deep water route referred to on Admiralty Chart 1404 as 'the deeper water found in the anchoring prohibited area. This is considered to be a 'narrow channel' as defined in IRPCS Rule 9.
- **Loch Ryan:** Those waters lying to the South of a line from Milleur Point to Finnarts Point.
- **Stranraer Harbour:** that part of Loch Ryan lying to the South of a line from Kirkcolm Point at 54° 58.06' N, 05° 03.66' W thence extending in an imaginary straight line to a point (HL2) at 54° 57.34' N, 05° 01.31' W thence extending in an imaginary straight line to a point (HL3) at 54° 57.34' N, 05° 00.52' W lying to the south of the Port of Cairnryan.
- **Small Vessel:** A vessel other than a Large Vessel as defined above.

## CODE OF PRACTICE

- 1. Loch Ryan:** Small vessels entering or leaving Loch Ryan should, where possible, keep to the west of the 'Anchoring Prohibited Area' to avoid impeding the passage of any ferry traffic navigating to, or from, Port of Cairnryan Limited or Loch Ryan Port. As a guide, ferry traffic will not sail within 500m of the west shore of Loch Ryan.
- 2. Small Vessels:** Small Vessels should avoid crossing the 'Anchoring Prohibited Area' in the Northern half of Loch Ryan if such crossing impedes a ferry navigating to, or from, Port of Cairnryan Limited or Loch Ryan Port.
- 3. Sailing Vessels:** Sailing Vessels should use their auxiliary engine (if fitted) at all times when navigating through the 'Anchoring Prohibited Area' in the Northern half of Loch Ryan and in any event shall take all reasonable actions to not impede the passage of a ferry.
- 4. Wash:** All vessels should show proper seamanship and common courtesy to others and avoid making excessive wash.
- 5. VHF Radio:** All vessels approaching or navigating within Loch Ryan should listen on VHF Channel 14 and 16 for Ferry announcements.
- 6. Inbound Ferries:** Ferries approaching Loch Ryan will broadcast to "All ships in Loch Ryan" on passing Corsewell Point and on passing Milleur Buoy and will state their intention to use the deeper water in the prohibited anchorage area.
- 7. Outbound Ferries:** Five minutes prior to departure outbound Ferries will broadcast their intention to depart to "All ships in or approaching Loch Ryan" and will state their intention to use the deeper water in the prohibited anchorage area. Ferries will make a further broadcast to "All ships approaching Loch Ryan" on passing Forbes Shoal buoy.
- 8. Ferry Agreement:** Be aware that Ferries in close proximity might pass each other starboard to starboard by agreement.
- 9. Summary of Agreements:** The Ferry companies have a Summary of Agreements detailing safe passage arrangements for ferries within Loch Ryan. Other users should familiarise themselves with this document.
- 10. Berthing:** Large vessels and ferries berthing at Loch Ryan Port and Port of Cairnryan require searoom to manoeuvre on to or off the berths.
- 11. Very Small Vessels:** Kayaks, paddleboards and inflatables should make every effort to ensure they are easily visible from the bridge of large vessels by use of brightly coloured clothing and lights when appropriate; this also applies to swimming parties.

## **ADDITIONAL INFORMATION**

Stena Line, P&OCL and D&G Council maintain websites for their ports as per the links below. These websites contain additional information which may be of use to Mariners such as:

- Live weather and tidal conditions.
- Tidal Predictions.
- Notices to Mariners
- Marine Safety & Policy
- Survey Charts
- Timetables

Stena Line Loch Ryan Port

<https://www.lochryanport.com/index.html><https://www.lochryanport.com/index.html>

P&OCL

<https://www.portoflarne.co.uk/port-of-cairnryan-limited/>

D&G Council Stranraer

<https://www.dumgal.gov.uk/article/15847/Stranraer-West-Pier-Marina>